



NEW ADVANCED CONTRACTING COMPANY

DESIGNING TOMORROW, BUILDING TODAY

**PREQUALIFICATION
NACC SERVICES**

Index

- NACC profile
- Organization Structure.
- Technical Department.
- Warehouse, Cost Control, QA/QC
Safety Departments.
- projects references NACC
- Key Management.
- NACC Manpower.
- Strategy partners- manpower.
- NACC Equipment and Machinery.
- Government and trade licenses
Commercial & Legal Documents.
- Certification & Clients Testimonials.
- IMS-QHSE Policy and Porocedure.
- Certification of Completion Work.





NACC Profile

WHO WE ARE

New Advanced Contracting Company (N.A.C.C.) was founded in Sweden in 2014, where it established itself as an innovator in the construction and contracting industry. Recognized for its precision, craftsmanship, and commitment to excellence, the company built a strong reputation through the successful delivery of complex projects. In 2022, N.A.C.C. expanded to Riyadh, Saudi Arabia, combining its Swedish heritage of innovation with local expertise to redefine construction and contracting in the region.

With a comprehensive portfolio of services, N.A.C.C. specializes in general contracting, design-build, construction management, preconstruction services, and workshop industrial solutions. Its expertise in infrastructure projects and MEP (Mechanical, Electrical, and Plumbing) systems ensures the efficient execution of even the most demanding requirements. The company also provides bespoke handmade decorative items, furniture, and lighting, blending artistry with functionality to create unique designs, alongside offering logistics solutions and sustainability consulting to align with modern efficiency and environmental standards. Notable accomplishments include the construction of large-scale hangars and tent stores for industrial and commercial use.

Having completed projects across Sweden, Qatar, UK, Syria and other international markets, N.A.C.C. leverages global expertise to deliver successful outcomes across diverse industries.

N.A.C.C.'s expansion to Riyadh is a strategic step toward becoming a globally recognized leader in construction, building on a legacy of trust, innovation, and sustainable practices to shape the future of the industry.



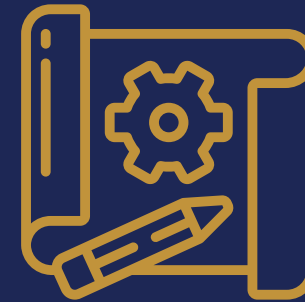
Years of Experience

11+



Number Of Workers

3000+



Number Of Projects

140+



Our Mission

N.A.C.C pioneers innovative, sustainable construction solutions. We offer comprehensive services, from design to project delivery, prioritizing excellence, safety, and lasting relationships with clients, partners, and communities.



Our Vision

N.A.C.C. aspires to set the global standard in construction and contracting, delivering transformative projects, pioneering innovative solutions, and creating lasting impact that shapes the future of industries worldwide.



Our Services



Contracting & Industries Sector

Construction

Passionate about turning visions into reality, at (N.A.C.C), we seamlessly execute construction projects from conception to completion. Our dedicated team of experienced professionals strives to exceed client expectations, delivering exceptional results every time.

From meticulous planning to flawless execution, we offer full-scale construction solutions that prioritize quality and adherence to industry standards. Our commitment lies in bringing your vision to life, ensuring excellence at every phase of the construction journey.



Infrastructure Services

Step into the future with N.A.C.C's Infrastructure Services. Our commitment to excellence unfolds in every project, where precision planning and execution redefine industry standards. From concept to realization, trust N.A.C.C to build the infrastructure that propels progress, embodying innovation, efficiency, and lasting quality.

N.A.C.C fosters a culture of continuous improvement, scrutinizing every service, including infrastructure projects, for areas of enhancement. Regular assessments and proactive measures underscore our commitment to staying at the forefront of innovation and delivering sustained excellence.

Landscape & Hardscape Architecture

At N.A.C.C, we excel in the art of landscape architecture, where we specialize in crafting breathtaking outdoor environments that seamlessly marry aesthetics with practicality. Our customized landscape and hardscape services are dedicated to elevating the charm and functionality of your property, turning it into an inviting haven.

Our team is dedicated to creating unique landscape designs that capture individual preferences, enriching the visual appeal of your property. Whether it's flourishing gardens or tranquil water features, we have the expertise to breathe life into your envisioned landscapes.

Transform your outdoor space with our top-notch hardscape installations. From intricately designed pathways to sturdy retaining walls and captivating patios, we utilize high-quality materials and skilled craftsmanship, ensuring enduring allure.





MEP (Mechanical , electrical , plumbing and HVAC)

Critical to every building's functionality, safety, and comfort, MEP (Mechanical, Electrical, and Plumbing) systems are our expertise at New Advance Construction Company (N.A.C.C). From residential to commercial and industrial projects, we specialize in providing comprehensive MEP services. Going beyond individual systems, we adopt a holistic approach, seamlessly integrating MEP systems for optimal performance. Our collaborative team ensures seamless integration with the overall building design, guaranteeing efficient operations.



Fit-Out Services

We enhance spaces with our comprehensive turn-key Fit-Out solutions, which encompass ceilings, drywalls, painting, doors, hardware, joineries, and a variety of flooring options. Our attention to detail is unparalleled as we rejuvenate interiors, adding a touch of finesse and functionality to every corner. With a team of highly skilled craftsmen and designers, we bring forth a marriage of creativity and precision, ensuring superior finishes and a seamless integration of aesthetics and practicality.



Marble & Stone

At New Advance Construction Company (N.A.C.C), our Marble, Stone, and Granite services redefine elegance and durability in every project. From sourcing premium materials to expert cutting, precise installation, and meticulous restoration, we elevate spaces with the timeless charm of natural stone.

Our skilled artisans and craftsmen meticulously craft these materials to seamlessly integrate into your designs, ensuring flawless finishes and enduring beauty. With a commitment to excellence.





Steel Structure & Aluminum Services

Our focus is on delivering impeccable Aluminium & Steel services, devoted to crafting resilient and durable structures. From sourcing premium materials to precise fabrication and installation, our unwavering commitment guarantees top-tier quality and strength in every project.

Our expertise lies in maximizing the distinctive properties of aluminum's lightweight durability and steel's robustness. This allows us to create innovative and reliable structures, meticulously aligned with stringent engineering standards.

Explore our diverse product range, including Facade systems, Windows & Doors, Frameless installations, Aluminium Cladding, Shutters, Steel, Stainless Steel, and Manhole solutions. Each product reflects our dedication to quality, functionality, and enduring strength, meeting the highest industry standards.



Joinery

Our Joinery services represent craftsmanship at its finest. From custom furniture to decorative elements, we craft and install bespoke woodwork solutions, ensuring every detail exudes elegance and functionality.





Logistics services Sector

Site Logistics Services

Expert Mobilization and Demobilization Are the cornerstone of our project operations. Delicately orchestrated, our services cover seamless coordination of on-site materials, equipment, and resources, coupled with efficient and responsible waste removal processes.



We oversee the entire logistical framework, ensuring precise management of deliveries, storage, and distribution of vital materials crucial for project advancement. Our commitment to efficiency and safety drives our Site Logistics Services, effectively streamlining workflow to create a productive project environment customized to meet specific project requirements.



Our Mobilization and Demobilization services are streamlined processes aimed at setting up and dismantling project sites. With precision planning and execution, we ensure efficient movement and setup of equipment, allowing for swift project initiation and closure.



PMV (Plant, Machinery, Vehicle)

We understand the importance of reliable transportation in project execution. Our fleet of vehicles, including trucks, vans, and specialized transport, is well-equipped and maintained to deliver materials and equipment safely and punctually to project sites.

Backed by skilled and certified operators, our machinery and vehicles are operated with precision and expertise. Safety protocols are rigorously followed to ensure a secure working environment for both our team and project stakeholders.

Our extensive fleet of cutting-edge machinery is meticulously maintained and regularly updated to ensure peak performance. From excavators to bulldozers, loaders to dump trucks, and generators. our machinery is ready to meet the demands of diverse projects, big or small.



Tent, Hangars & Warehouse Setups

N.A.C.C specializes in creating adaptable and practical spaces through our Tent & Hangars Setup services. Whether for temporary structures or extensive hangars, we customize solutions to meet diverse project requirements, ensuring highly effective and flexible work environments.

Additionally, our proficiency extends to designing and organizing store areas with meticulous layouts that optimize both space and functionality. Our expertise guarantees meticulously planned store setups, aligned with rigorous engineering standards, ensuring the utmost quality and safety. These setups are specifically tailored to elevate operational efficiency within project sites.

Porta cabin offices & container

We offer a diverse range of cabins and containers designed to cater to multifaceted storage, workspace, and logistical needs across various industries and applications.

Versatile Cabins

Tailored Spaces for Every Need

Our cabins serve as versatile solutions suitable for diverse applications. From construction sites to event management, these cabins provide functional spaces for offices, break rooms, ticket booths, and more, delivering comfort and efficiency wherever they're deployed.

Containers for Varied Uses

Our containers are not just for ports; they're adaptable for a multitude of purposes. Whether it's on-site storage for construction materials, mobile shops for retail, or temporary accommodations, these containers offer secure and reliable spaces for different needs.





Architect and Design



Interior Design Sector

Interior design Services

Our Interior Design services at (N.A.C.C) are driven by our proficient engineering team. With seasoned expertise, we specialize in harmonizing aesthetics and functionality, tailoring exclusive interior solutions that cater to diverse styles and project demands.

From conceptualization to meticulous execution, our team orchestrates space transformations, and curates spaces blending elegance, functionality, and individual preferences across residential, commercial, retail, office, and selective hospitality projects.





Custom Furniture & Decorative Sector

Custom Furniture & Decorative Items

Our custom decorative items hail from Syria, where our dedicated teams work tirelessly to craft each piece. Partnering with local factories in these regions allows us to ensure the highest quality materials, including marble, wood, steel, and more, all sourced directly from these areas. Every item is meticulously handmade by our skilled artisans, showcasing the authentic craftsmanship of these regions and offering our clients the finest in decorative pieces.





A blue-tinted photograph of two business people shaking hands. The image is centered around the handshake, with the text 'Our Clients' overlaid in a bold, yellow font with a white outline. The background is a blurred office setting.

Our Clients





السدحان
AL SADHAN



Diet Center
دايت سنتر



LORENZO
INDULGE YOUR SENSES





VOCA



Sister Company



شركة بسيل المتحدة المحدودة
Baseel United Ltd. Company

Strategy Partner



بن ظفرة
BINZAFRAH

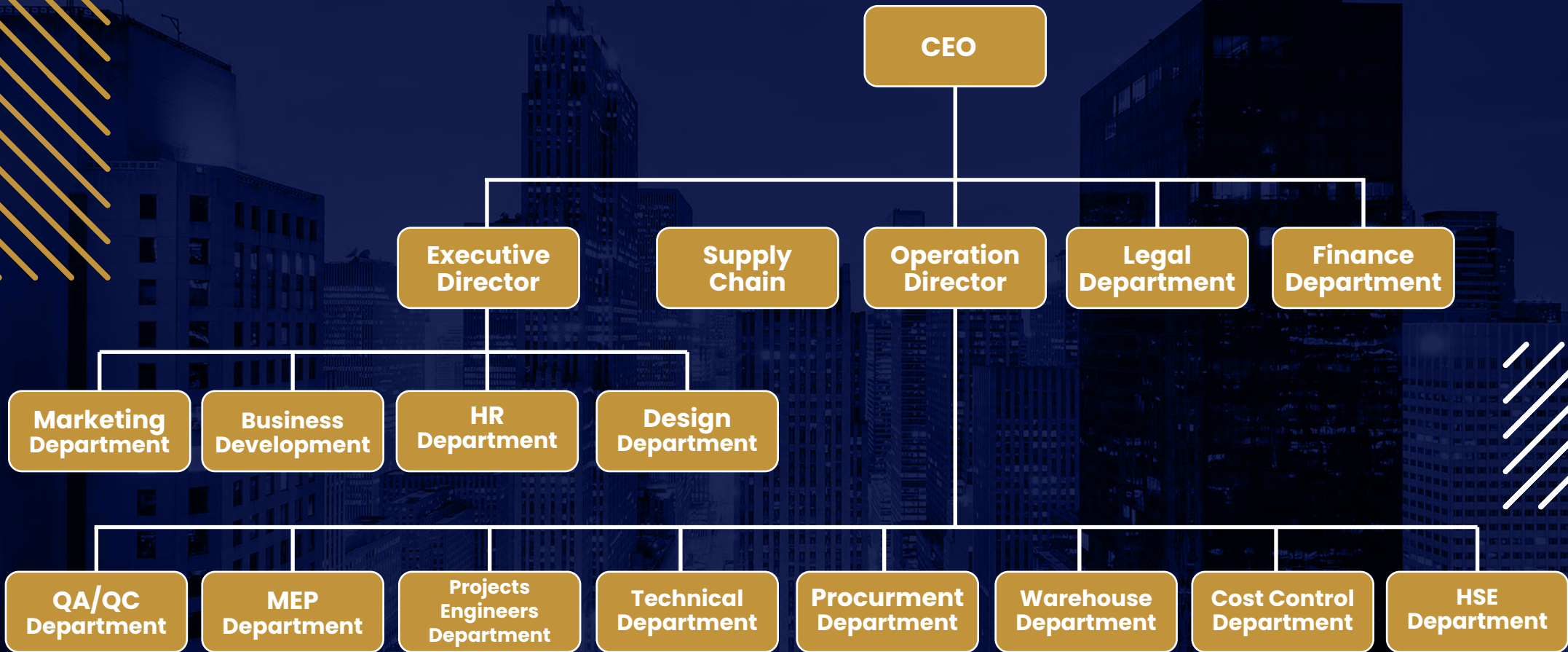
Our Team and Expertise

Our dedicated team forms the core of our success. Comprising seasoned professionals, we bring diverse expertise across general contracting, design-build, construction management, preconstruction, and sustainability consulting. Each team member contributes a unique skill set and extensive experience, collectively empowering us to adopt innovative approaches and cutting-edge technologies. Their commitment to delivering high-quality projects within defined timelines and budgets reflects our unwavering dedication to excellence and client satisfaction.



Rawad Swid – 
Chief Executive Officer

Organization Structure





Tamam Al Massrani - 
legal counsellor



Marwan Abdoh - 
Executive Projects Director



Aouis Alhamed - 
Design Director



Mohamad Mazen Al Malki - 
Executive Projects Director



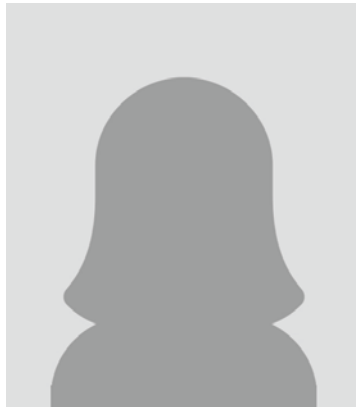
Abeer Al Laham - 
International Graphic Design Director



Oways Al Shaghori - 
Technical Director



Khalid Alruqi - 
HR Manager



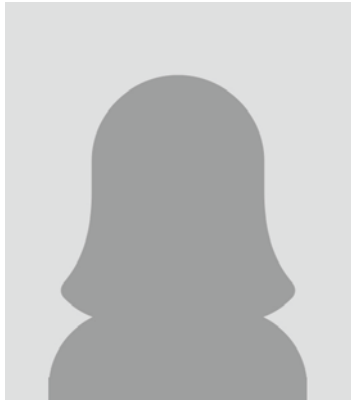
Lubna Al Shaghori - 
Marketing Manager



Yamen Swid - 
Logistic & Warehouse Manager



Raed Abdulsalam - 
Technical Procurement Director



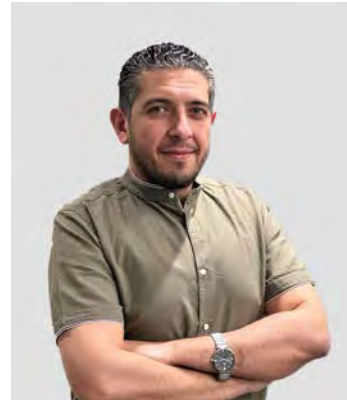
Dana Al majed - 
HSE Manager



Anan Shabello - 
Senior Construction Manager



Abdulkader Hasan Alsalahi - 
QAQC Manager



Mohammed Refaat - 
Commercial & Financial Director



Ahmed Maher Shaqqi - 
Planning Director



Modar Espir - 
Project Engineer Manager



Kevin Maktabi - 
General Manager Sweden Branch



Anas Kholandi - 
General Manager Syria branch



Jalal Rihawi - 
General Manager UK Branch

Technical Department

**Technical
Manager**

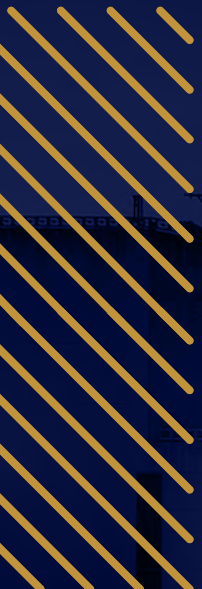
**Technical Engineer
(WR-CR-ER)**

**Technical Coordinator
(WR-CR-ER)**

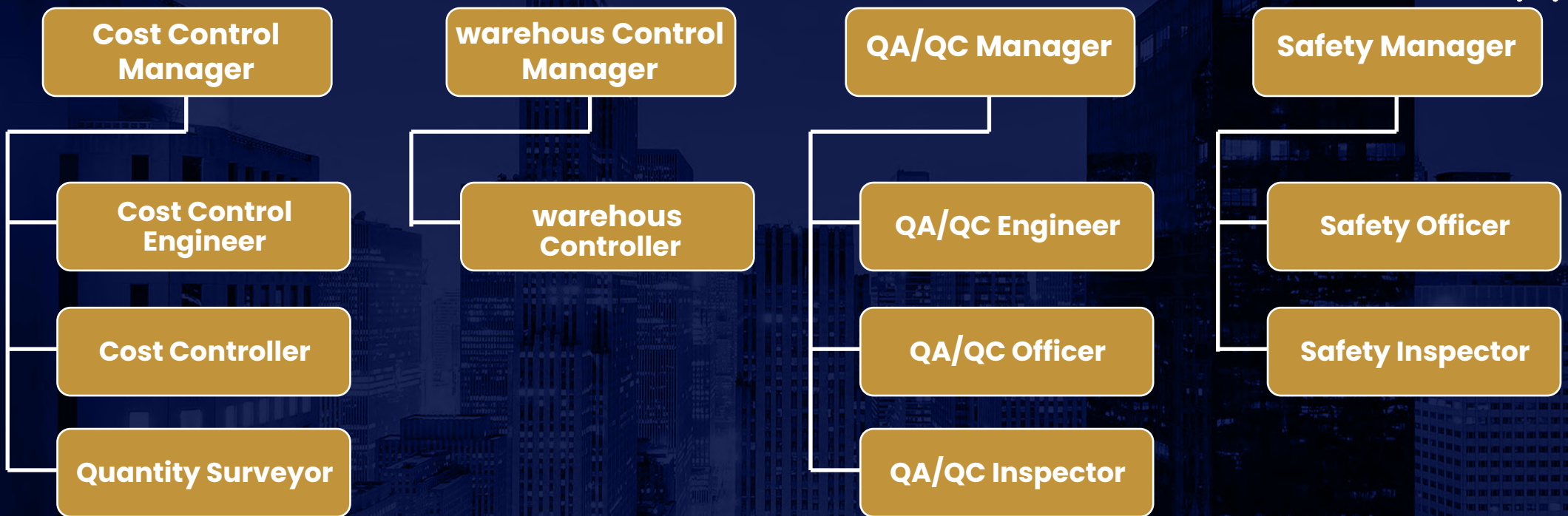
**Technical Assistant
(WR-CR-ER)**

**Draftsman
(WR-CR-ER)**

**Document Controller
(WR-CR-ER)**



Warehouse, Cost Control, QA/QC, Safety Departments

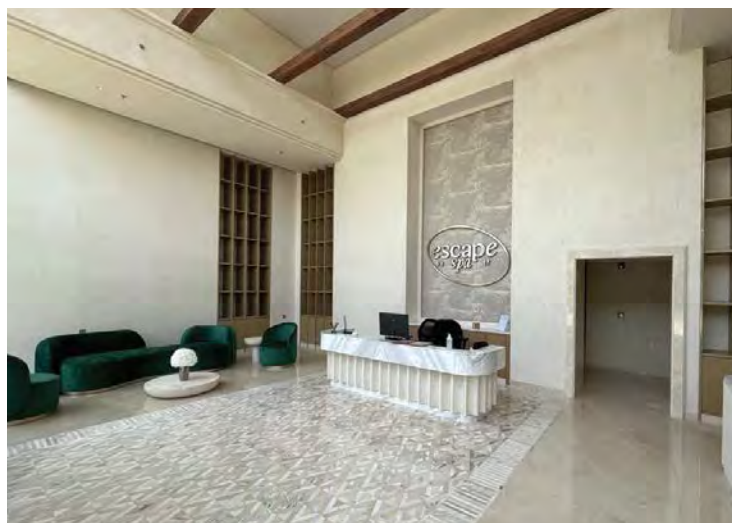


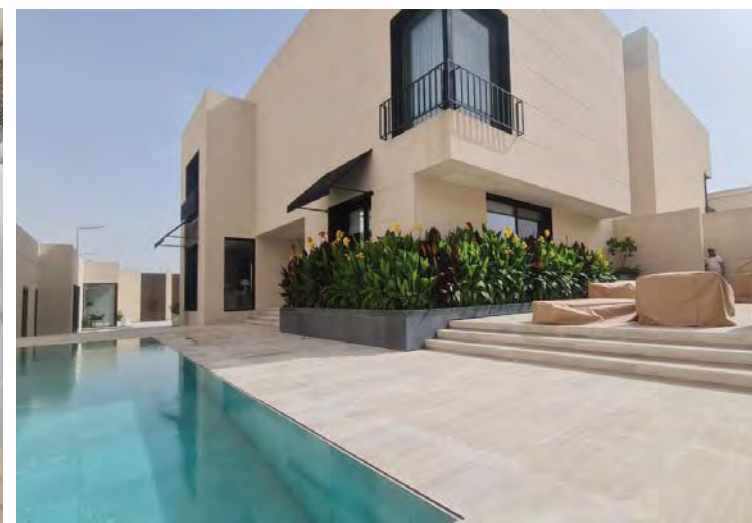
A construction site at dusk or dawn. The sky is a deep blue with scattered white clouds. In the foreground, the skeletal structure of a building under construction is visible, consisting of numerous vertical rebar columns and horizontal beams, all silhouetted against the sky. A large tower crane stands prominently on the right side, its long jib extending diagonally across the upper half of the frame. Another smaller crane is visible in the lower right corner. The overall scene is industrial and dramatic due to the low light and high contrast.

Our Projects

- 
- ▲ Red Sea
 - ▲ O-club by Michel Fadel
 - ▲ Hell's kitchen
 - ▲ All Dining Restaurant
 - ▲ Avalanche
 - ▲ Taaziz tower
 - ▲ Dar Al mashaeer tower
 - ▲ Boulevard world
 - ▲ Flamingo Room
 - ▲ Al lulu mall
 - ▲ Dallah Hospitals
 - ▲ Spimaco addwaeih
 - ▲ Ministry of Energy
 - ▲ Lokmana Coffee
 - ▲ Netrro
 - ▲ Design & Build
 - ▲ Elegancia Offices
 - ▲ Ras Qasbah Project
 - ▲ Sindalah Project
 - ▲ Roasting House
 - ▲ NACC Head Office
 - ▲ Neom Residential Village
 - ▲ Al Wajh Aairport
 - ▲ Al Qiddiya Office
 - ▲ Office Hwadi Ltd.Co
 - ▲ Al-Bustan Village
 - ▲ Al-Ain FC
 - ▲ Tamimi Markets
 - ▲ KAFD
 - ▲ Prince Mugren Palace
 - ▲ SABIC Al Waseel Hills
 - ▲ Nofa Resorts
 - ▲ Briman Reservoir
 - ▲ Hilton hotel
 - ▲ Sasco gas station
 - ▲ Maskan
 - ▲ W.O.17
 - ▲ Tabuk Reserve Fence
 - ▲ Diplomatic Quarter Riyadh
 - ▲ Al Muhaidib Farms
 - ▲ king Abdullah Petroleum Research Center
 - ▲ King Fahd Security College
 - ▲ Imam Turki Bin Abdullah Grand Mosque
 - ▲ Mock Up Water Park
 - ▲ Hotel Al Qiddiya
 - ▲ Tent Install Labour
 - ▲ Messhall Al Qiddiya General Organization for Social Insurance Office

- 
- ▲ Khamis Mushayt Showrooms
 - ▲ Al Kharj Factory and Warehouses
 - ▲ Neom flood channel project
 - ▲ Roasting House Warehouses
 - ▲ Roasting House Factory
 - ▲ Al-Olayan Company Asphalt
 - ▲ Trolley Market
 - ▲ Al-Nakhlah Market
 - ▲ Al-Sadhan Supermarket
 - ▲ Spar Market
 - ▲ Trolley Offices in KAFD
 - ▲ Al-Assalah Offices
 - ▲ Roasting House Office
 - ▲ Al Shaalan Villa
 - ▲ NCI Oxagon offices in Neom
 - ▲ Sadan offices in Jeddah
 - ▲ Keller Williams Offices
 - ▲ Hittin Villas Complex
 - ▲ Chuck E. Cheese's Restaurant
 - ▲ Meat Moot Restaurant
 - ▲ Zoe Restaurant
 - ▲ Reev Burger Restaurant
 - ▲ 32 Grimp Restaurant
 - ▲ Roasting House Store
 - ▲ Diet Center Restaurant
 - ▲ Hawa Amman Restaurant
 - ▲ Burgerizzer Restaurant
 - ▲ The Smoke Restaurant
 - ▲ Saldwitch Restaurant
 - ▲ Signature
 - ▲ Sinjar Restaurant
 - ▲ Burger Fuel Restaurant
 - ▲ Tomoor Al-Ula
 - ▲ Lorenzo Restaurant
 - ▲ Lorenzo central kitchen
 - ▲ Ocean Basket Restaurant
 - ▲ Macaroni Grill
 - ▲ Restaurant Applebee's
 - ▲ Manoosha Restaurant
 - ▲ Cloud Kitchens in Riyadh
 - ▲ Shawarma m3lim restaurant In Hail
 - ▲ Fast Fit
 - ▲ Escape Spa
 - ▲ Canary GYM & SPA
 - ▲ Claws
 - ▲ Fitness Time







Quality Assurance

At N.A.C.C, our commitment to excellence is underpinned by stringent quality assurance measures embedded in every facet of our services.

Our commitment to quality extends to adhering to industry-leading best practices. We comply with relevant certifications and industry standards and we meticulously follow established protocols and guidelines, integrating the latest innovations and technologies to deliver services that surpass industry norms.

Central to our quality assurance is a client-centric focus. We actively engage with our clients, understanding their needs and expectations, and ensuring that our services not only meet but exceed their requirements. Regular feedback mechanisms further bolster our commitment to delivering exceptional quality.

We believe in a culture of continuous improvement. Regular audits, assessments, and a proactive approach to identifying areas for enhancement form the cornerstone of our commitment to evolving and enhancing our services continuously.



An aerial photograph of a city skyline, featuring a prominent skyscraper with a distinctive curved top. The image is overlaid with a dark blue gradient. The text "Projects References" and "NACC" is centered in a bold, yellow, sans-serif font with a white outline.

Projects References

NACC

On-Going Works



AMAN SAMAR HOTEL ZONE 2

Client: BU-JV
Project Area: 27000 m²
Location: SAUDI ARABIA
Scope of Service: MSE WALL - TERRAMESH SYSTEM
HIGHT FROM 2 TO 11 M



QIDDIYA WATERPARK

Client: QIDDIYA
Contractor: UCC – BAWANI (BU-JV)
Location: RIYADH, KSA
Scope of Service: COMPLETE CONSTRUCTION OF DESIGN AND BUILD

PROJECT DETAILS:

SITE OFFICE FOR QIDDIYA WATERPARK PROJECT for GENERAL SITE 9714 SQ.M in RIYADH.





QIDDIYA PROJECT 2

Client: QIDDIYA
Contractor: INFRAROAD BINYAH – IB-JV
Location: RIYADH, KSA
Scope of Service: DESIGN & BUILD

PROJECT DETAILS:

SITE OFFICE DESIGN AND BUILD FOR A QUANTITY OF 7800 SQ.M IN RIYADH.



Industrial Sector – Construction Works

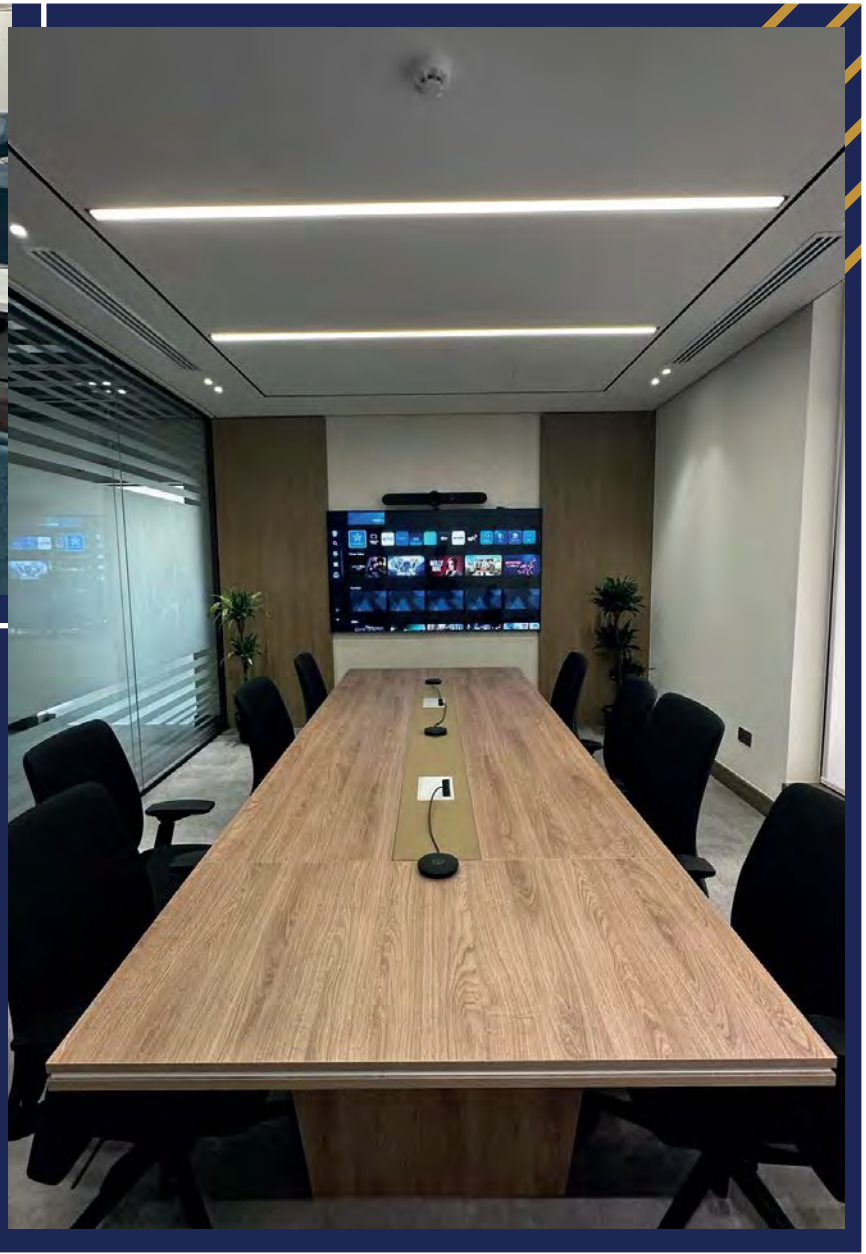


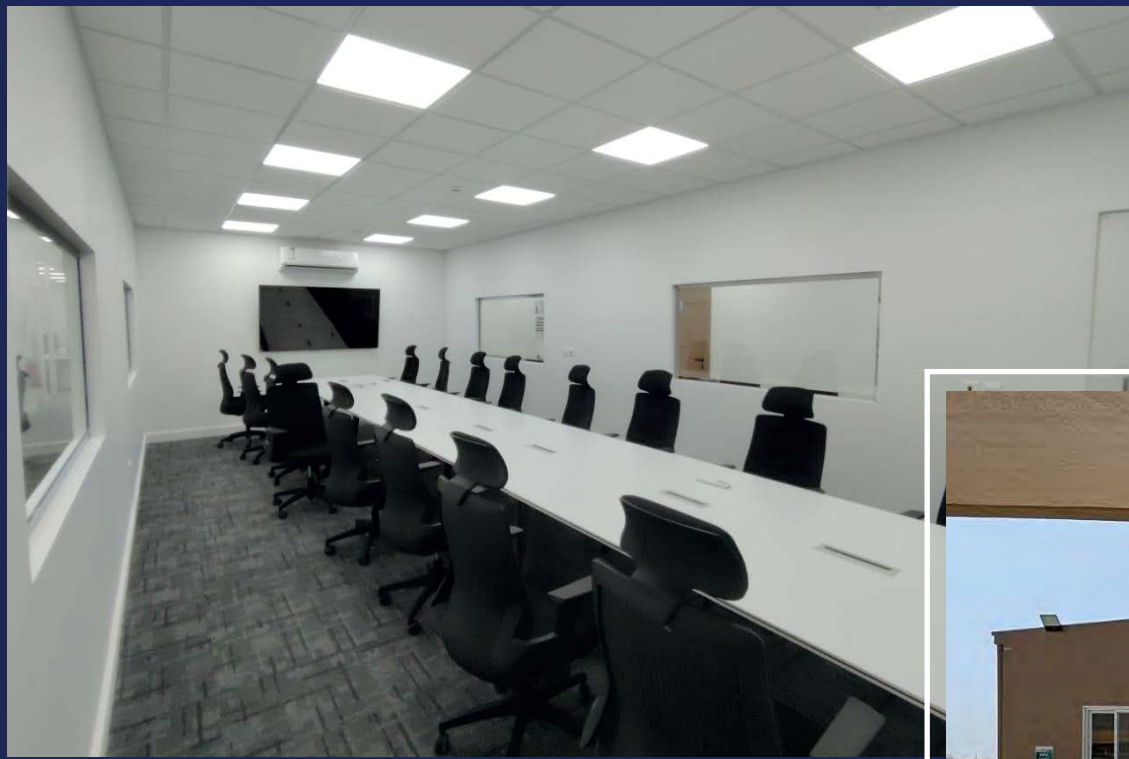
UCC HEAD OFFICE

- Client:** URBACON SAUDI, HEAD OFFICE
UCC
- Project Area:** 1100 M²
- Location:** RIYADH, KSA
- Scope of Service:** DESIGN & BUILD



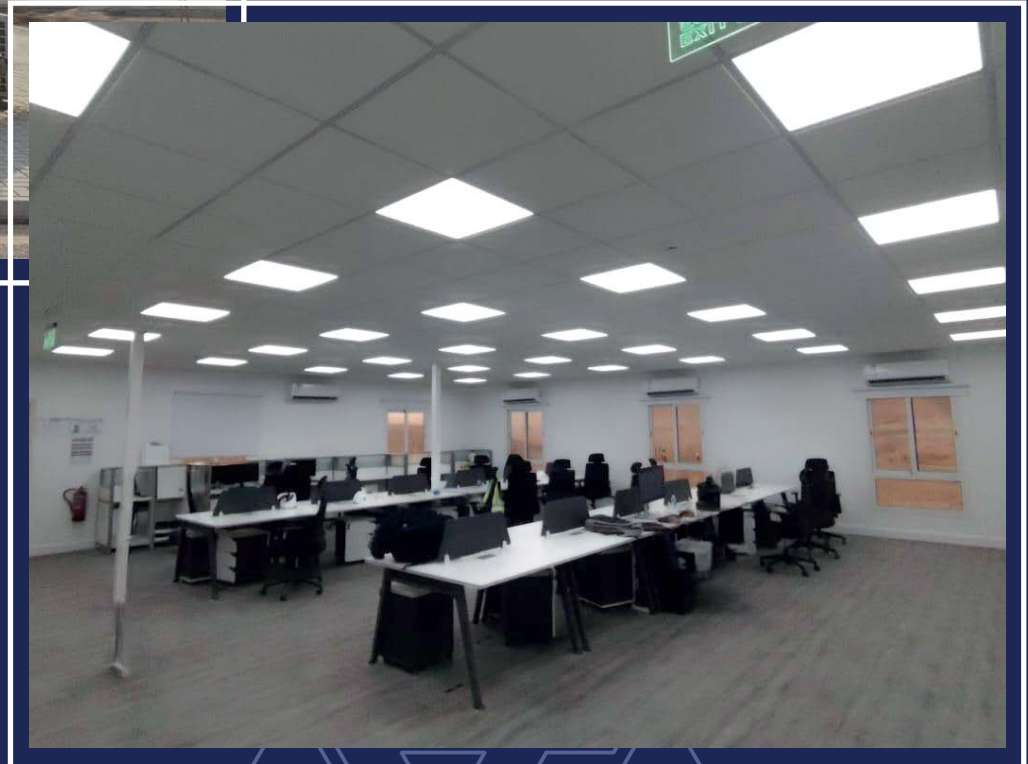
Construction Works





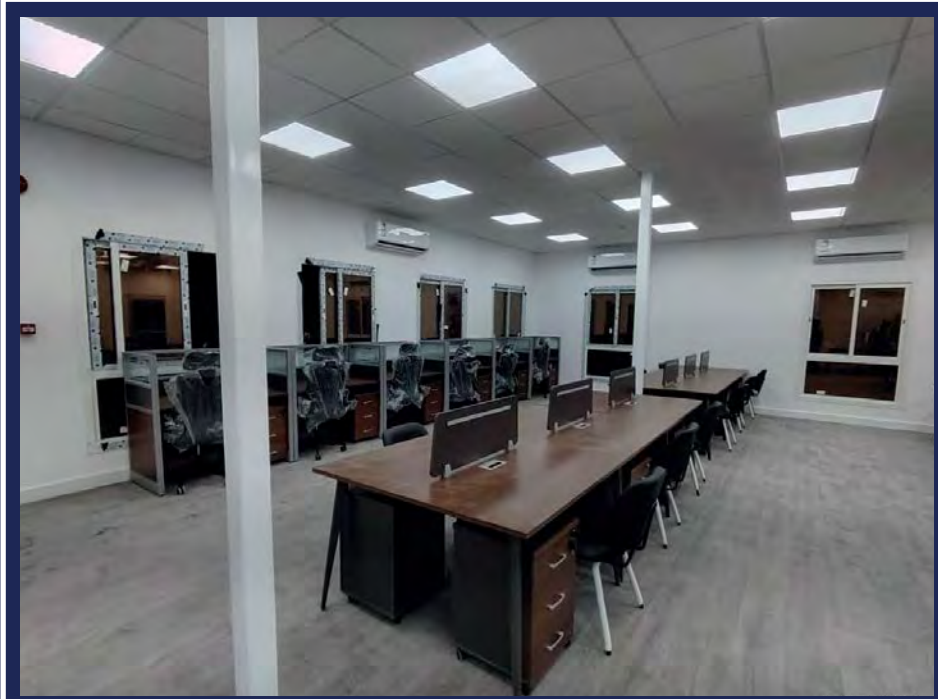
DIRIYAH OFFICES

- Client:** UCC-SAUDI
- Project Area:** 7300 SQ.M
- Location:** WADI SAFAR, DIRIYAH RIYADH, KSA
- Scope of Service:** DESIGN & BUILD



Client: UCC
Project Area: 1250 SQ.M
Location: WADI SAFFAR DIRIYAH PROJECTS
Scope of Service: DESIGN & BUILD

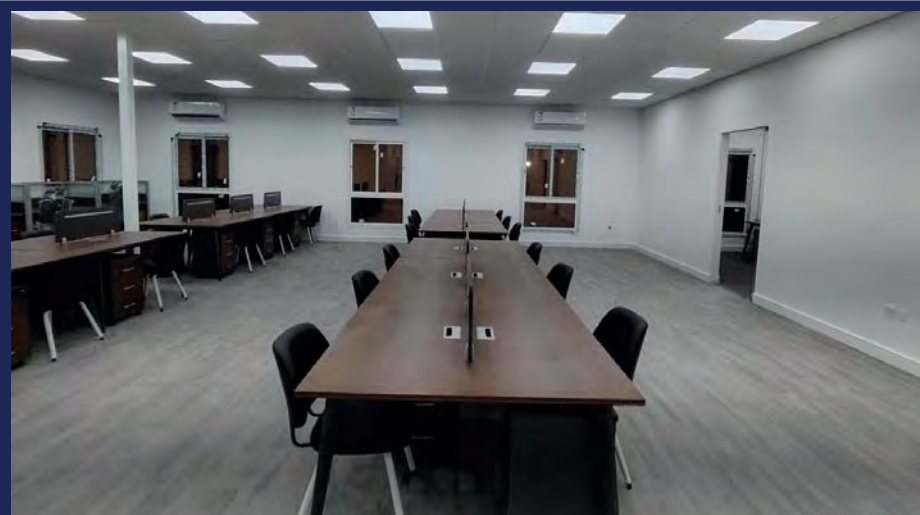




OBEROI HOTEL – POLO CLUB

Scope of Service:

PMC OFFICE, PMO OFFICE, CAR SHADE, ASPHALT ROAD MARKING, HARDSCAPE, SECURITY CABIN BANNAR, CLINIC PORT CABIN, CHAINLINK FENCE TYPE A.



CHEDI HOTEL – FAENA HOTEL SIX SENSES HOTEL

Scope of Service:

PMC OFFICE, PMO PORT CABIN, CLINIC PORT CABIN, CAR SHADE, CHIANLINK FENCE, TYPE A HOARDING FENCE, BANNAR, SIGN BOARD SITE MEP WORK FOR THE OFFICES, HARDSCAPE ASPHALT





OFFICE HWADI LTD

Client: HWADILTD
Location: RIYADH, KSA
Scope of Service: DESIGN & BUILD

PROJECT DETAILS:

OFFICE DESIGN AND BUILD FOR A QUANTITY OF 2000 SQ.M IN RIYADH.





JOHANSSON VILLA

Client: MARKUS JOHANSSON

Location: SWEDEN

Scope of Service: DESIGN & BUILD



HITTIN VILLAS COMPLEX

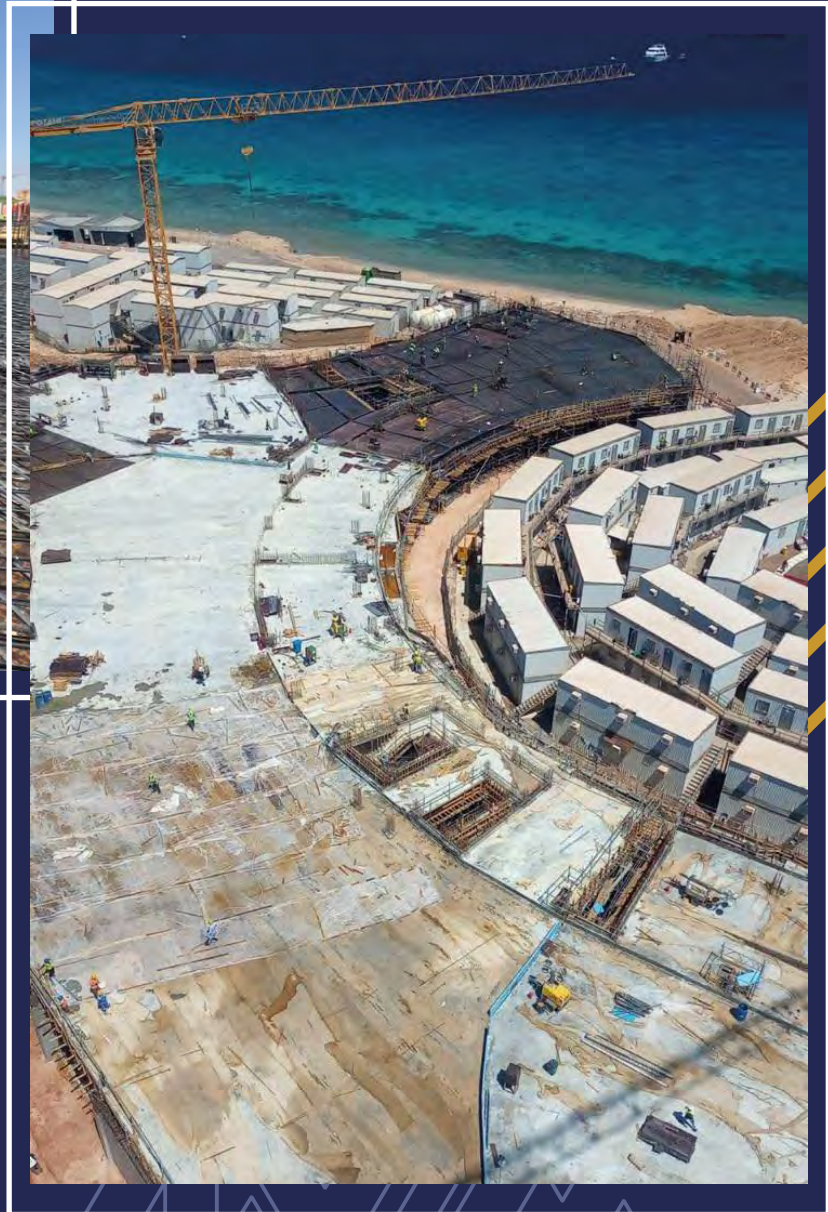
Client: REAL ESTATE DEVELOPMENT COMPANY

Project Area: 5600 m²

Location: RIYADH, KSA

Scope of Service: FULL CONSTRUCTION SCOPE





SINDALAH PROJECT

Client: BIN ZAFRAH HOLDING COMPANY

Project Area: 35,356 M²

Location: NEOM, SINDALAH ISLAND

Scope of Service: FULL CONSTRUCTION SCOPE



CHUCK E. CHEESE'S RESTAURANT

Client: UNIQUE HOSPITALITY COMPANY

Project Area: 3100 M²

Location: TABUK, KSA

Scope of Service: FULL CONSTRUCTION SCOPE





RAS QASBAH PROJECT

Client: BIN ZAFRAH HOLDING COMPANY
Project Area: 540,000 M²
Location: NEOM, RAS QASABAH, KSA
Scope of Service: DESIGN AND BUILD



Industrial Sector – MEP Works



FAENA HOTEL

- Client:** BU-JV
- Project Area:** 20000 M²
- Location:** WADI SAFAR, DIRIYAH, KSA
- Scope of Service:** BASEMENT AND GROUND WITH 4 FLOORS



**WATER FILLING FACTORY
IN AL-QASEEM**



MEP Works

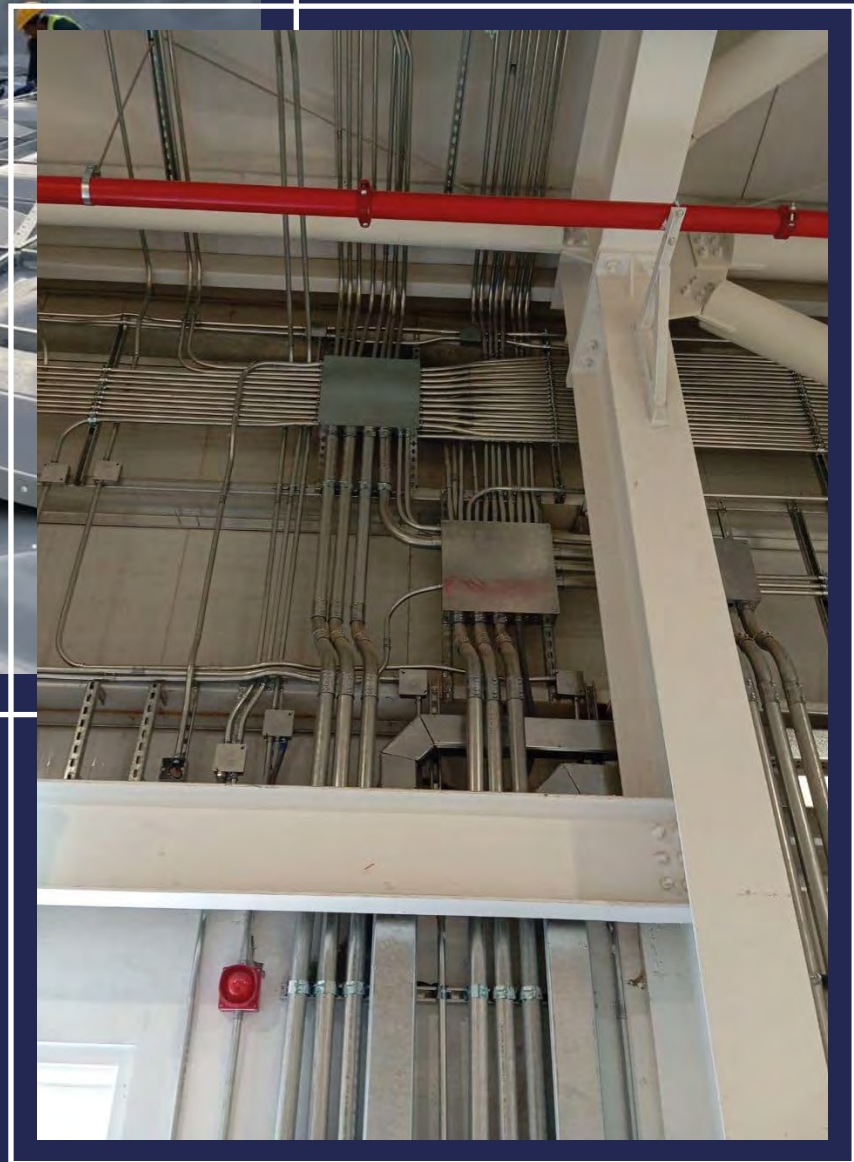
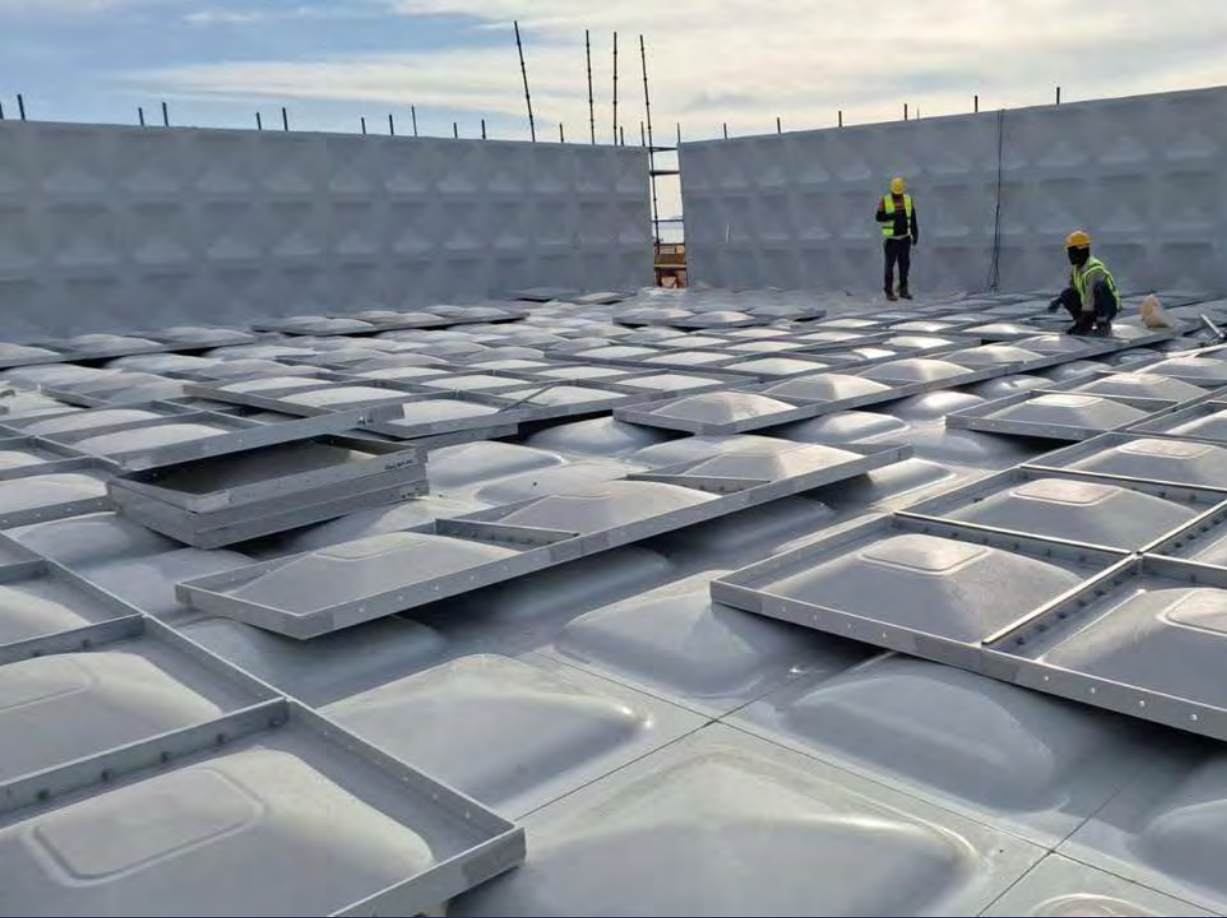


PHARMACY WAREHOUSE IN SUDAIR



HOSPITAL IN RIYADH - NAMAR





RAS QASABAH IN NEOM





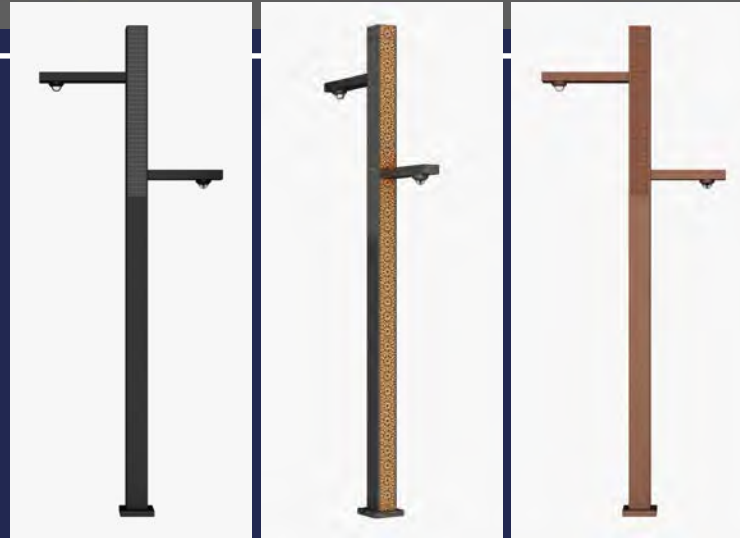
NEOM RESIDENTIAL VILLAGE

PROJECT DETAILS:

Client: NEOM
Contractor: AL MAJAL AL ARABI GROUP
Location: NEOM, KSA
Scope of Service: HDPE DISTRIPTION PIPES

HDPE DISTRIPTION PIPES FOR A QUANTITY OF 5200 LM IN RIYADH.





LUSAIL PALACE PROJECT

Client:

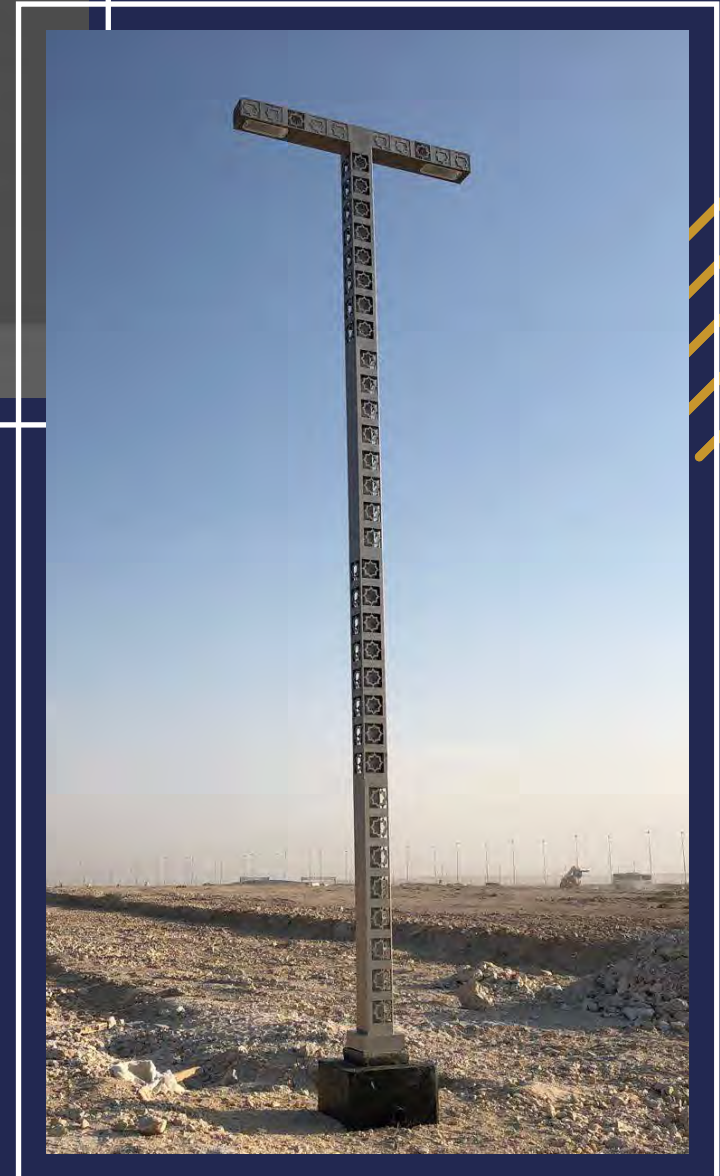
UCC

Location:

QATAR

Scope of Service:

DESIGN & BUILD
STREET POLE LIGHTS



AL WAJH ARPORT

Client: GENERAL AUTHORITY OF CIVIL AVIATION

Contractor: AL MOMAYAZEN CONTRACTING COMPANY

Location: AL WAJH, KSA

Scope of Service: MV CABLES DISTRIPUTION

PROJECT DETAILS:

MV CABLES DISTRIPUTION FOR A QUANTITY OF 10,000 LM IN AL WAJH.



AL WAJH AIRPORT

Client: GENERAL AUTHORITY OF CIVIL AVIATION

Contractor: AL MOMAYAZEN CONTRACTING COMPANY

Location: AL WAJH, KSA

Scope of Service: FIBER DISTRIBUTION

PROJECT DETAILS:

FIBER DISTRIBUTION FOR A QUANTITY OF 9,000 LM IN AL WAJH.



Fit-out Sector



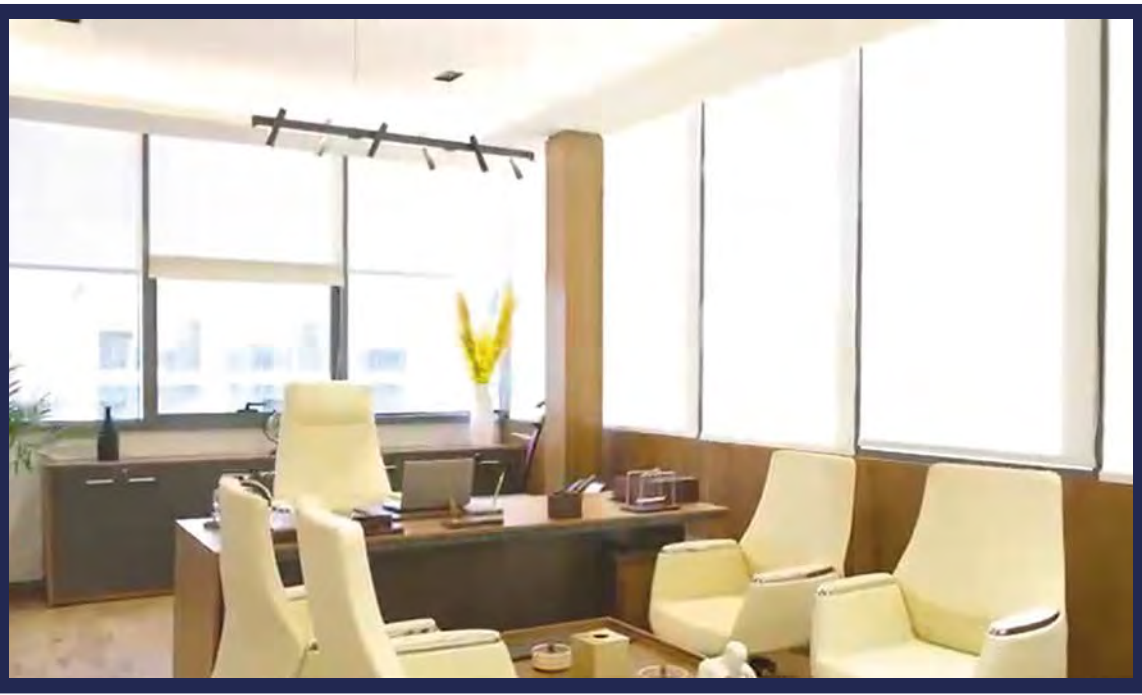
PROJECT DETAILS:

HEAD OFFICE FITOUT AND DESIGN FOR A QUANTITY OF 1200 SQ.M IN RIYADH.

ELEGANCIA MEP HEAD OFFICE

Client: ELEGANCIA MEP
Location: RIYADH, KSA
Scope of Service: FITOUT AND DESIGN







MEAT MOOT RESTAURANT

Client: FOOD HOUSE COMPANY

Project Area: 950 SQ.M

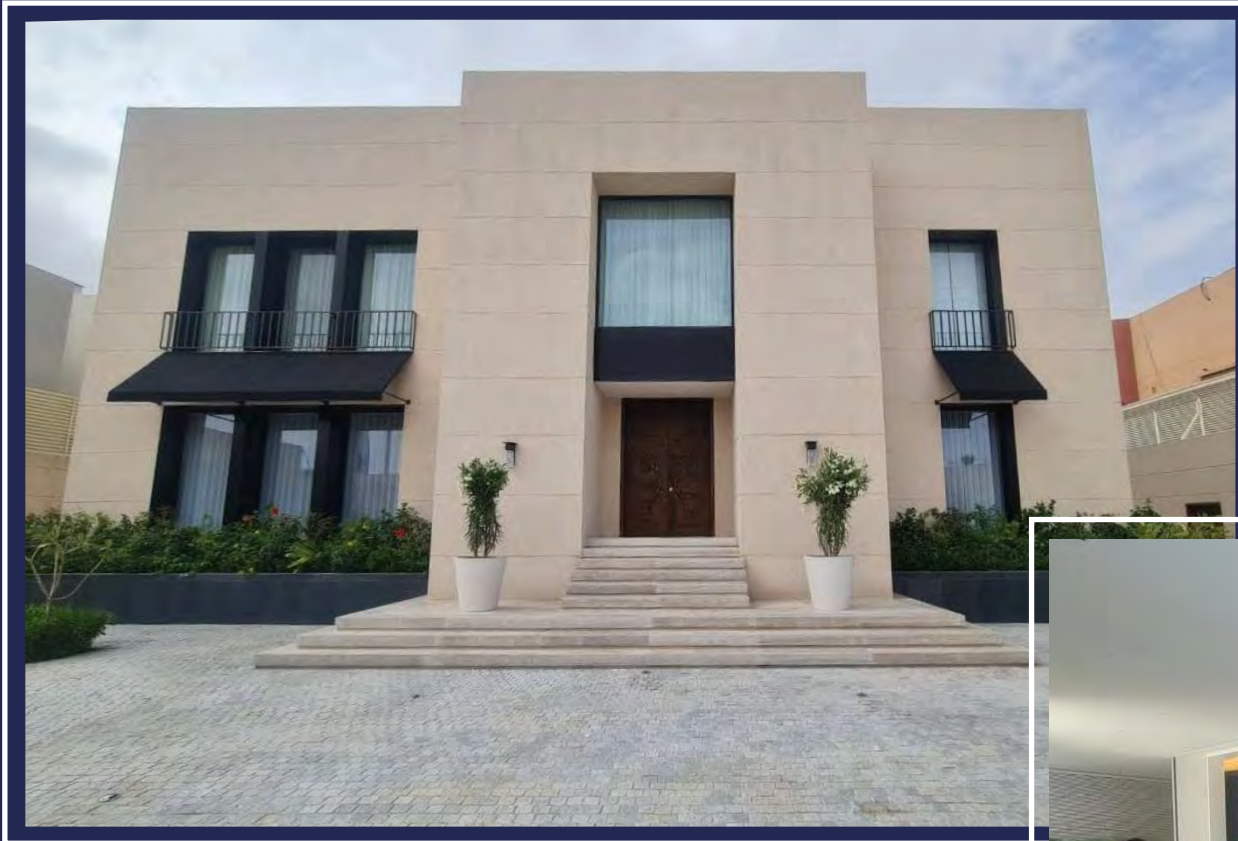
Location: RIYADH, KSA

Scope of Service: FINISHING, MEP



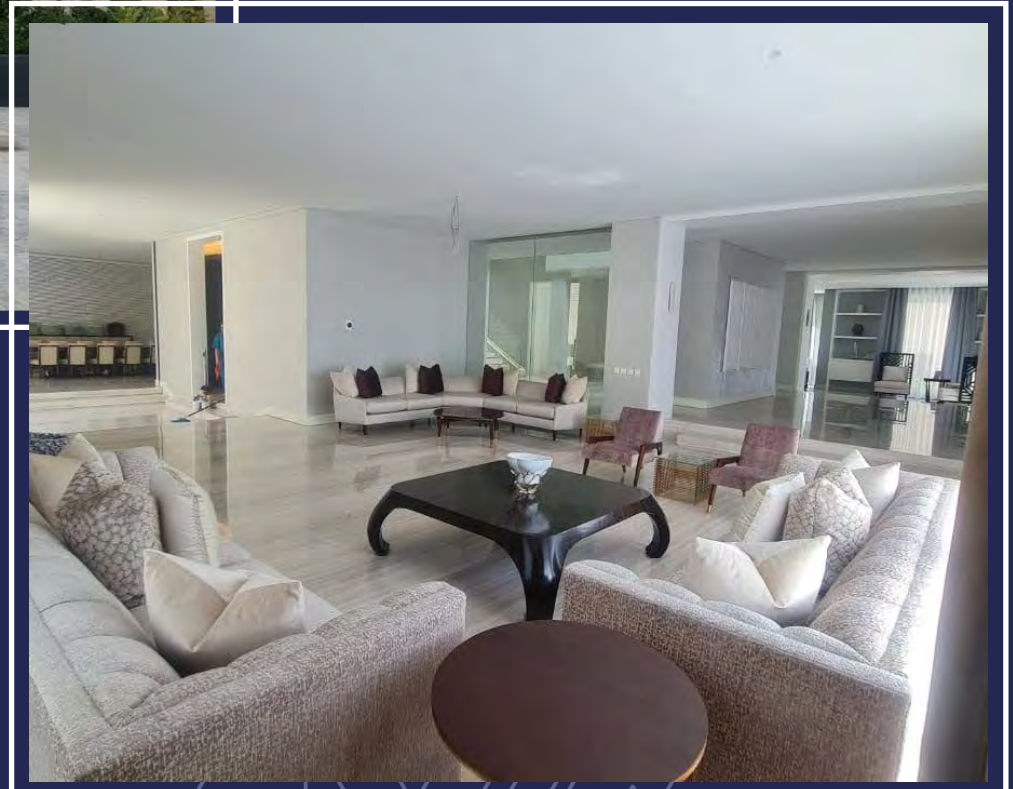
MACARONI GRILL RIYADH

- Client:** LOCAL AGENT
- Project Area:** 850 SQ.M
- Location:** RIYADH, KSA
- Scope of Service:** FINISHING, MEP



AL SHAALAN VILLA

Client: MR. SULTAN AL SHALAN
Location: RIYADH, KSA
Project Area: 950 SQ.M
Scope of Service: DESIGN AND BUILD





AL-NAKHLAH MARKET

Client: SASCO
Project Area: VARIOUS SPACES
Location: MULTIPLE REGIONS
Scope of Service: FINISHING, MEP



TROLLEY OFFICES

Client: TROLLEY TRADING COMPANY

Location: RIYADH,KAFD

Project Area: 750 SQ.M

Scope of Service: DESIGN AND BUILD



AL-ASSALAH OFFICES

- Client:** HAWADY COMPANY
- Project Area:** 2700 SQ.M
- Location:** RIYADH, KSA
- Scope of Service:** DESIGN AND BUILD



ROASTING HOUSE OFFICE

Client: ROASTING HOUSE
TRADING COMPANY

Project Area: 1250 SQ.M

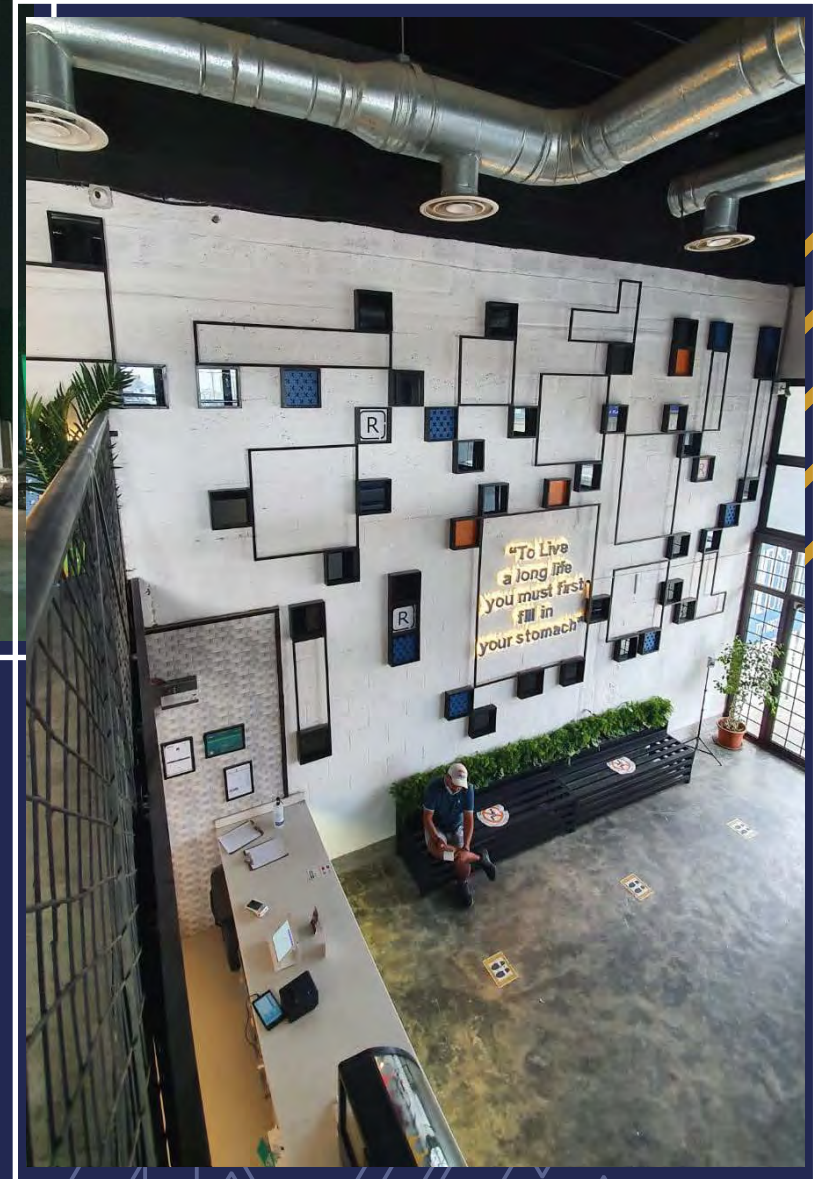
Location: RIYADH, KSA

Scope of Service: DESIGN, FINISHING, MEP



REEV BURGER HAIL RESTAURANT

- Client:** MR. FARES AL FARES
- Project Area:** 750 M²
- Location:** HAIL, KSA
- Scope of Service:** DESIGN, FINISHING, MEP





NC1 OXAGON OFFICES

Client: BIN ZAFRAH HOLDING COMPANY

Project Area: 750 SQ.M, 3 Buildings

Location: NEOM, OXAGON, KSA

Scope of Service: DESIGN, FINISHING, MEP



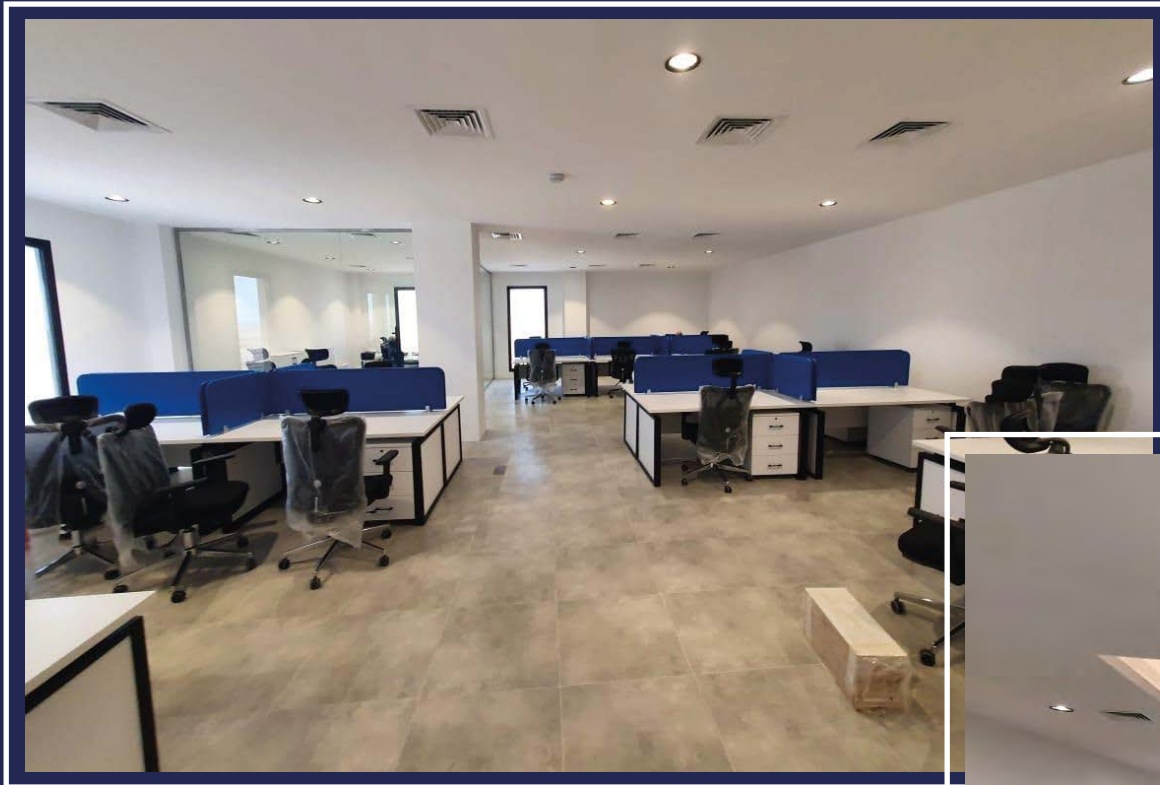
GENERAL ORGANIZATION FOR SOCIAL INSURANCE OFFICE

Client: BIN ZAFRAH HOLDING COMPANY

Location: ABHA, KSA

Project Area: 1500 SQ.M

Scope of Service: FINISHING, MEP



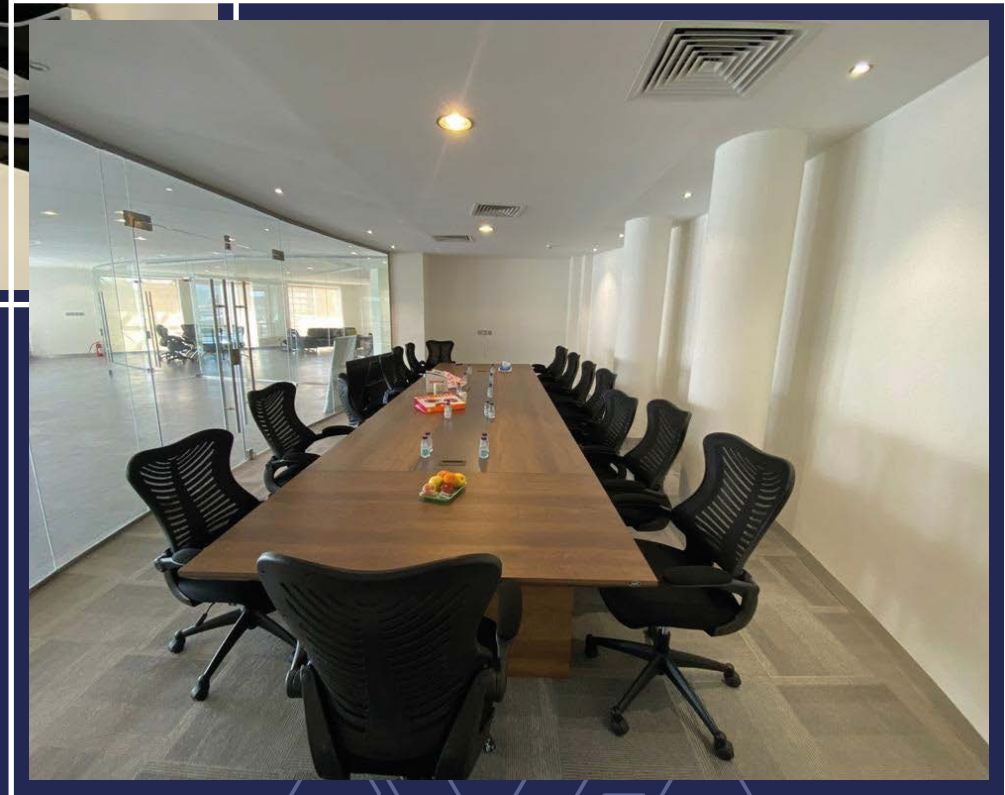
SADAN OFFICES IN JEDDAH

Client: HAWADY COMPANY

Project Area: 2650 SQ.M

Location: JEDDAH, KSA

Scope of Service: CONSTRUCTION,
FINISHING, MEP



KELLER WILLIAMS OFFICES

Client: KELLER WILLIAMS COMPANY

Project Area: 900 SQ.M

Location: RIYADH, KSA

Scope of Service: FINISHING, MEP



ZOE RESTAURANT

Client: LOCAL AGENT
Project Area: 150 SQ.M
Location: RIYADH, KSA
Scope of Service: FINISHING, MEP



REEV BURGER RIYADH RESTAURANT

Client: MR. FARES AL FARES

Project Area: 630 SQ.M

Location: RIYADH, KSA

Scope of Service: FINISHING, MEP



DIET CENTER RESTAURANT

Client: AL-MUNAJEM FOODS COMPANY

Project Area: VARIOUS SPACES

Location: MULTIPLE REGIONS

Scope of Service: FINISHING, MEP FURNITURE





THE SMOKE RESTAURANT

Client: DISTINCTIVE ENTRANCE COMPANY

Project Area: 1500 SQ.M

Location: RIYADH, KSA

Scope of Service: FINISHING, MEP



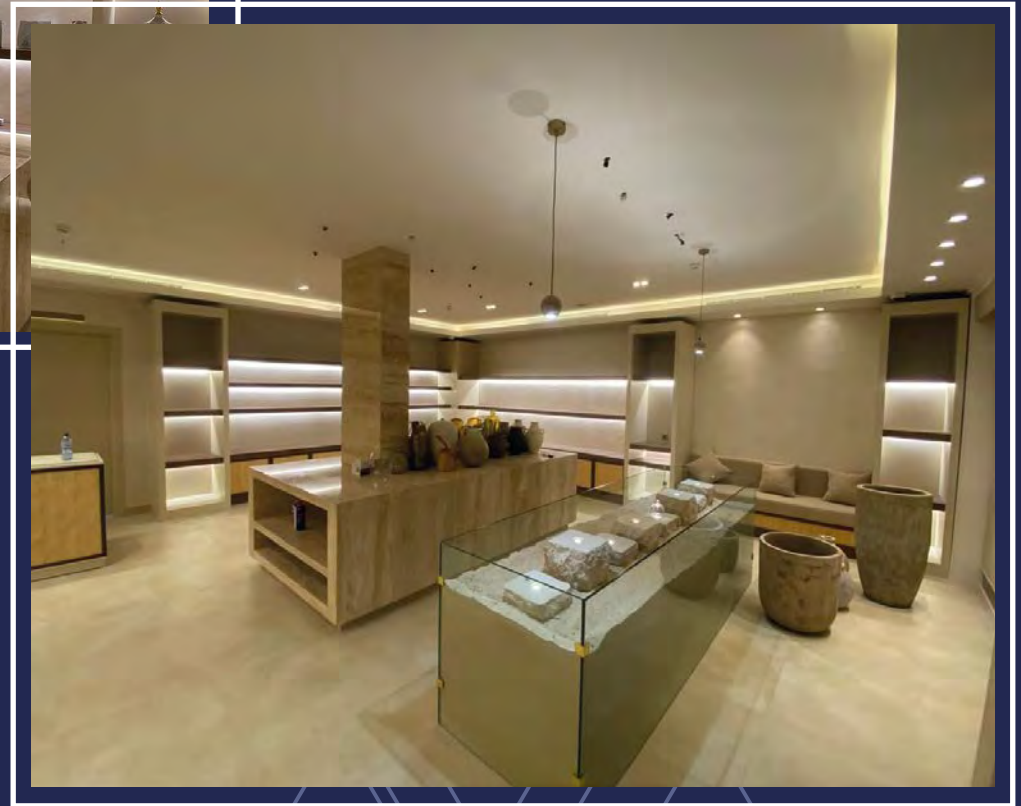
BURGER FUEL RESTAURANT

Client: SADF TRADING & DEVELOPMENT CO; LTD

Project Area: VARIOUS SPACES

Location: RIYADH, KSA

Scope of Service: FINISHING, MEP



TOMOOR AL-ULA

Client: SHAR COMPANY

Project Area: 270 SQ.M

Location: RIYADH, KSA

Scope of Service: FINISHING, MEP
FURNITURE



LORENZO RESTAURANT

- Client:** MAWARID FOOD COMPANY
- Project Area:** VARIOUS SPACES
- Location:** VARIOUS SPACES
- Scope of Service:** FINISHING, MEP, FURNITURE





OCEAN BASKET JEDDAH

Client: OCEAN BASKET COMPANY

Project Area: 1350 SQ.M

Location: JEDDAH

Scope of Service: FINISHING, MEP





APPLEBEE'S TAHLIA DISTRICT

Client: YEMENI BIN MAHFOUZ AND SONS

Project Area: 950 SQ.M

Location: RIYADH, KSA

Scope of Service: FINISHING, MEP



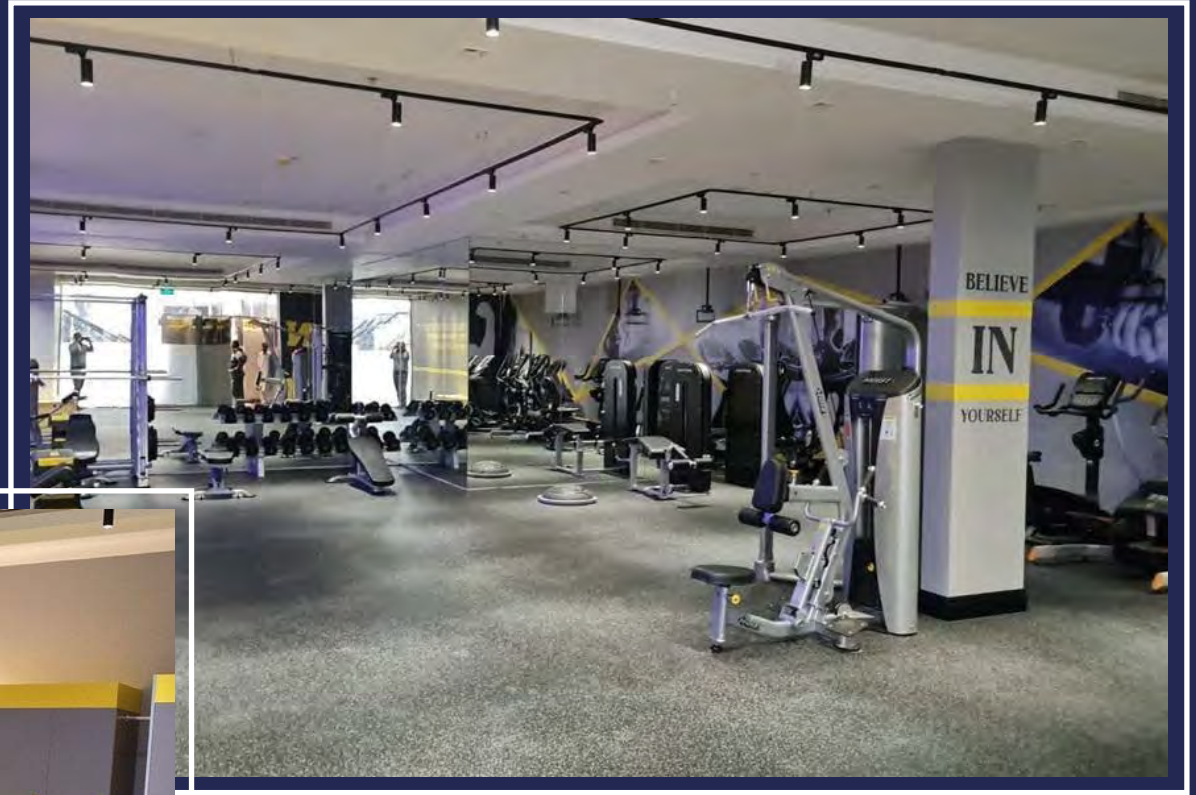
MANOOSHA RESTAURANT

- Client:** UNIQUE HOSPITALITY COMPANY
- Project Area:** VARIOUS SPACES
- Location:** VARIOUS SPACES
- Scope of Service:** FINISHING, MEP



FAST FIT

- Client:** FAST FIT EMS
- Project Area:** 110 SQ.M
- Location:** RIYADH, KSA
- Scope of Service:** DESIGN, FINISHING, MEP
FURNITURE



CANARY GYM & SPA

- Client:** CANARY REAL ESTATE DEVELOPMENT COMPANY
- Project Area:** 1200 SQ.M
- Location:** RIYADH, KSA
- Scope of Service:** DESIGN, FINISHING, MEP FURNITURE



CLAWS RIYADH

Client: RA NOON TRADING COMPANY

Project Area: 820 SQ.M

Location: RIYADH, KSA

Scope of Service: FINISHING, MEP FURNITURE

KING ABDULLAH FINANCIAL DISTRICT PROJECT

Client: KAFD
Contractor: SAUDI ARABIAN BAYTUR CONSTRUCTION CO
Location: RIYADH, KSA
Scope of Service: EPOXY TERRAZZO INSTALLATION

PROJECT DETAILS:

P 2.12 AND P 2.08 TOWERS SCOPE WAS: INSTALLATION EPOXY TERRAZZO SYSTEM FOR A QUANTITY OF 3,000 M² IN RIYADH.



PROJECT DETAILS:

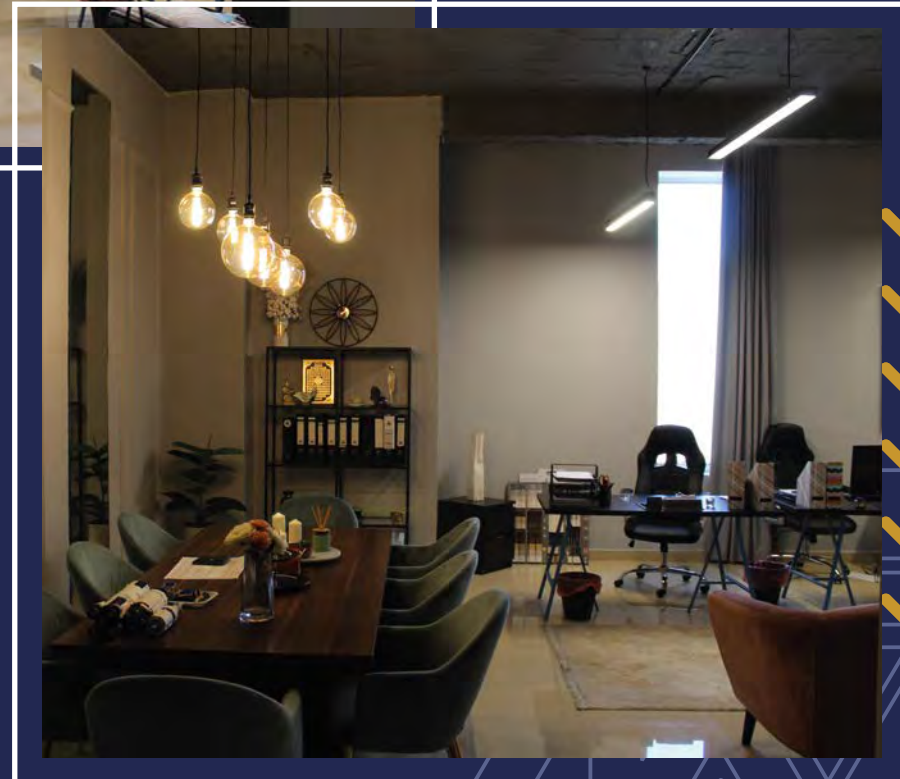
NACC HAED OFFICE DESIN
AND FIT-OUT FOR QTY 154
SQ.M IN RIYADH.

NACC HEAD OFFICE

Client: NACC

Location: RIYADH, KSA

Scope of Service: DESIGN AND FIT-OUT





FLAMINGO ROOM

PROJECT DETAILS:

Client: TECHNO PROJECT
Contractor: MIA-TECH
Location: DIRIYAH, KSA
Scope of Service: EPOXY TERRAZZO
SUPPLY & INSTALLATION

FLAMINGO ROOM DIRIYAH RIYADH. BUJAIRI
TERRACE SCOPE WAS:
SUPPLY AND INSTALLATION EPOXY
TERRAZZO FOR A QUANTITY OF 600 SQ.M IN
RIYADH.



KING ABDULLAH FINANCIAL DISTRICT PROJECT

Client: KAFD
Contractor: SAUDI ARABIAN BAYTUR CONSTRUCTION CO
Location: RIYADH, KSA
Scope of Service: ALUMINUM CLADDING SUPPLY AND INSTALLATION

PROJECT DETAILS:

4.05 TOWER SCOPE WAS:
SUPPLY AND INSTALLATION ALUMINUM CLADDING FOR A QUANTITY OF 400 M² IN RIYADH.





LOKMANA COFFEE

Client: PRIVATE
Location: QATAR
Scope of Service: DESIGN & BUILD

PROJECT DETAILS:

RESTAURANT DESIGN & BUILD FROM A TO Z QUANTITY OF 260 SQ.M IN AL MIRQAB MALL.



NETRRO

Client: NETRO
Location: RIYADH, KSA
Scope of Service: EPOXY SELFLEVEL
SUPPLY AND INSTALLATION

PROJECT DETAILS:

EPOXY SELFLEVEL SUPPLY AND
INSTALLATION FOR A QUANTITY OF
600 SQ.M IN RIYADH

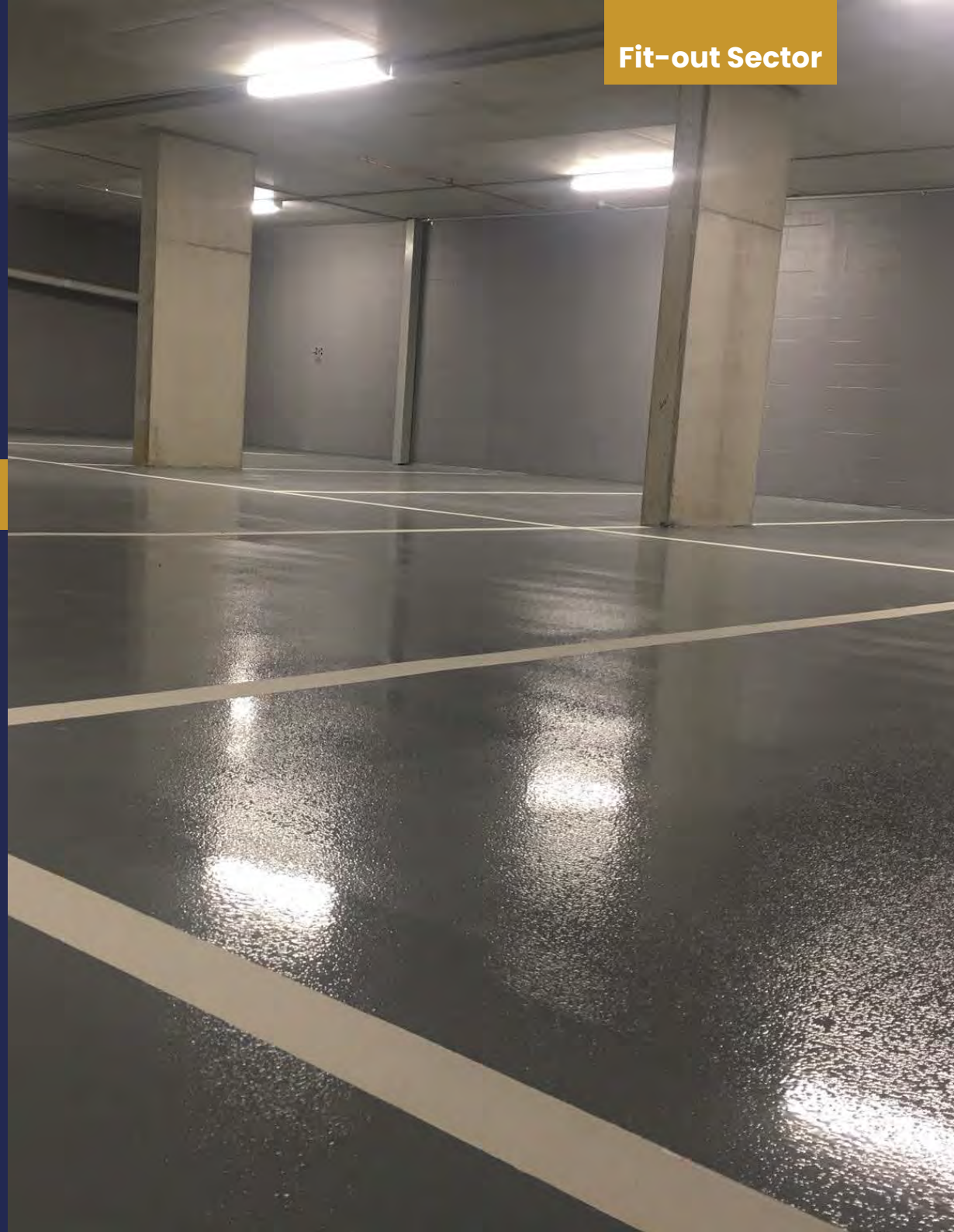


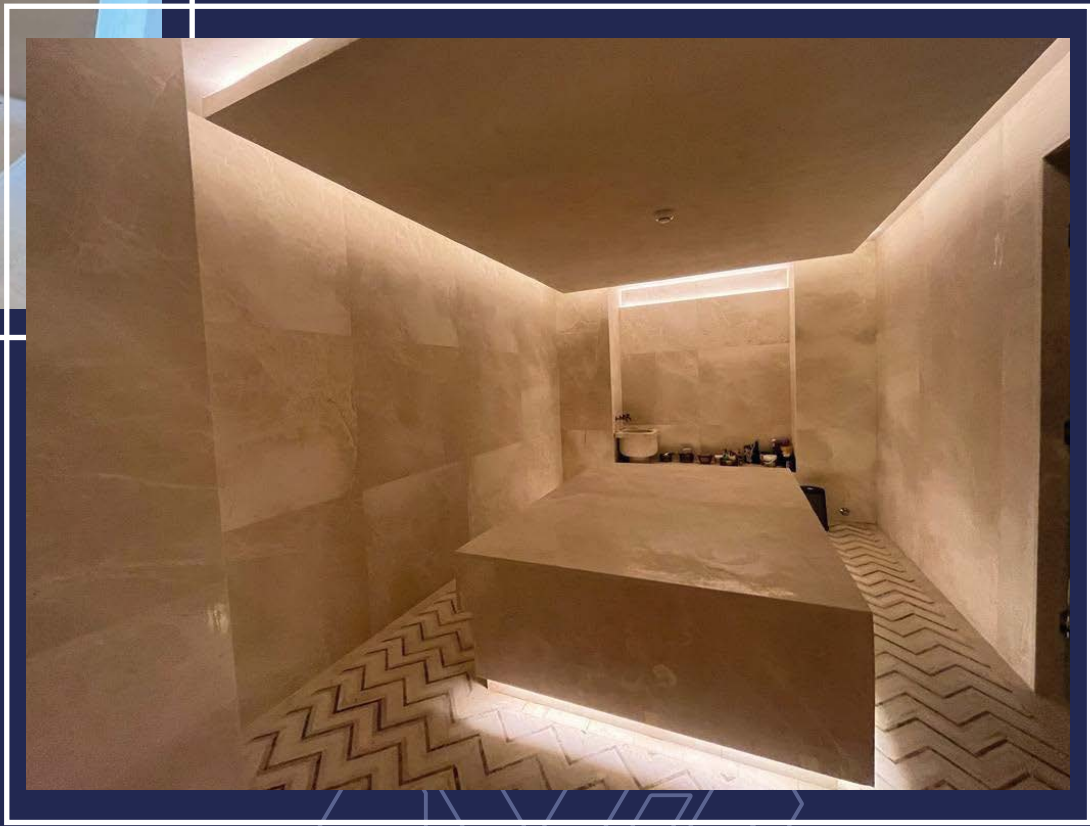
PRIVET VILLA

Client: PRIVET
Location: RIYADH, KSA
Scope of Service: EPOXY PAINT SUPPLY AND INSTALLATION

PROJECT DETAILS:

PARKING EPOXY PAINT SUPPLY AND INSTALLATION FOR A QUANTITY OF 400 M² IN RIYADH.





ESCAPE SPA TAHLIA

Client: WELLNESS COMPANY

Project Area: 1000 SQ.M

Location: RIYADH, KSA

Scope of Service: FINISHING, MEP



FAST FIT

Client: FAST FIT EMS
Project Area: 110 SQ.M
Location: RIYADH, KSA
Scope of Service: DESIGN, FINISHING
MEP, FURNITURE



Industrial Sector – Marble Works

SPIMACO ADDWAEIH

Client: SPIMACO ADDWAEIH
Contractor: MARON CONTRACTING
Location: RIYADH, KSA
Scope of Service: MARBLE SUPPLY AND INSTALLATION

PROJECT DETAILS:

SUPPLY AND INSTALLATION MARBLE FOR A QUANTITY OF 92 SQ.M IN RIYADH.



KING ABDULLAH FINANCIAL DISTRICT PROJECT

Client: KAFD
Contractor: AL BAWANI CONTRACTING
Location: RIYADH, KSA
Scope of Service: MARBLE SUPPLY AND INSTALLATION

PROJECT DETAILS:

SUPPLY AND INSTALLATION MARBLE FOR A QUANTITY OF 10000 M² IN RIYADH.





PROJECT DETAILS:

2.13 TOWER SCOPE WAS:
SUPPLY AND INSTALLATION
MARBLE FOR A QUANTITY OF
7500 SQ.M IN RIYADH.



**KING ABDULLAH FINANCIAL
DISTRICT PROJECT**

Client: KAFD
Contractor: SAUDI ARABIAN BAYTUR
CONSTRUCTION CO
Location: RIYADH, KSA
Scope of Service: MARBLE SUPPLY
AND INSTALLATION



KING ABDULLAH FINANCIAL DISTRICT PROJECT

Client: KAFD

Contractor: SAUDI ARABIAN BAYTUR CONSTRUCTION CO

Location: RIYADH, KSA

Scope of Service: MARBLE SUPPLY AND INSTALLATION

PROJECT DETAILS:

2.13 TOWER SCOPE WAS:
SUPPLY AND INSTALLATION MARBLE FOR A QUANTITY OF 9000 SQ.M IN RIYADH.



Dallah Hospitals

Client: DALLAH HOSPITALS
Contractor: MQRON
CONTRAKTING
Location: RIYADH, KSA
Scope of Service: MARBLE SUPPLY
AND INSTALLATION

PROJECT DETAILS:

SUPPLY AND INSTALLATION MARBLE
FOR A QUANTITY OF 1200 M² IN RIYADH.



MINISTRY OF ENERGY

Client: MINISTRY OF ENERGY
Contractor: ID WORK
Location: RIYADH, KSA
Scope of Service: MARBLE SUPPLY
AND INSTALLATION

PROJECT DETAILS:

SUPPLY AND INSTALLATION MARBLE
FOR A QUANTITY OF 400 SQ.M IN
RIYADH.





ESCAPE SPA IMAM ROAD

Client: WELLNESS COMPANY

Project Area: 1100 SQ.M

Location: RIYADH, KSA

Scope of Service: MARBLE SUPPLY
AND INSTALLATION

KING ABDULLAH FINANCIAL DISTRICT PROJECT

Client: KAFD
Contractor: SAUDI ARABIAN
BAYTUR
CONSTRUCTION CO
Location: RIYADH, KSA
Scope of Service: MARBLE SUPPLY
AND INSTALLATION

PROJECT DETAILS:

2.10 TOWER SCOPE WAS:
SUPPLY AND INSTALLATION MARBLE
FOR A QUANTITY OF 5000 M² IN
RIYADH.



KING ABDULLAH FINANCIAL DISTRICT PROJECT

Client: KAFD
Contractor: SAUDI ARABIAN
BAYTUR
CONSTRUCTION CO
Location: RIYADH, KSA
Scope of Service: MARBLE SUPPLY
AND INSTALLATION

PROJECT DETAILS:

2.11 TOWER SCOPE WAS:
SUPPLY AND INSTALLATION MARBLE
FOR A QUANTITY OF 4000 M² IN
RIYADH.



Industrial Sector – Jonary Works



HILTON DOUBLE TREE

Location: JEDDAH

Scope of Service: FITOUT & JOINERY





BIVÄG AB

Project Area: 90 SQ.M

Location: SWEDEN

Scope of Service: DESIGN AND BUILD FULL JONARY WORK



Client: RESTAD GÅRD
Location: SWEDEN
Scope of Service: FULL JONARY WORK AND FURNITURE



OBEROI HOTEL

Client: DIRIYAH PROJECTS

Contractor: UCC SAUDI

Location: WADI SAFAR, DIRIYEH, KSA

Scope of Service: WOODING ROOF & WOODING DOOR

Architect and Design Works





Architect and
Design Works



DALLAH & HALA

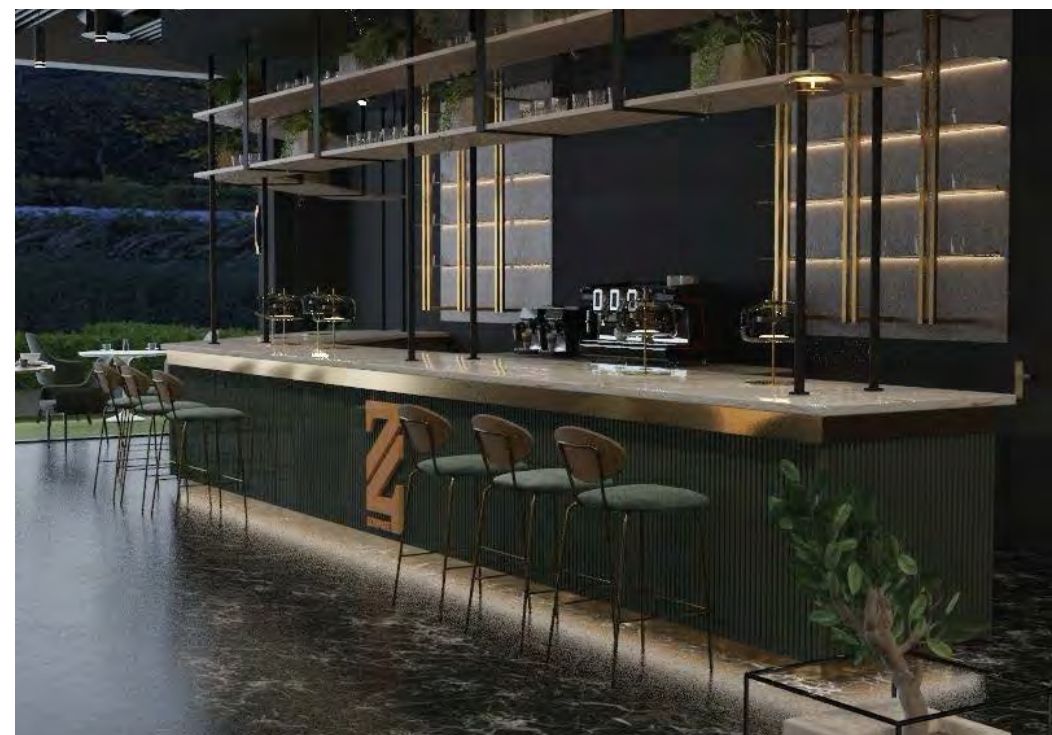




LOUNGE 74

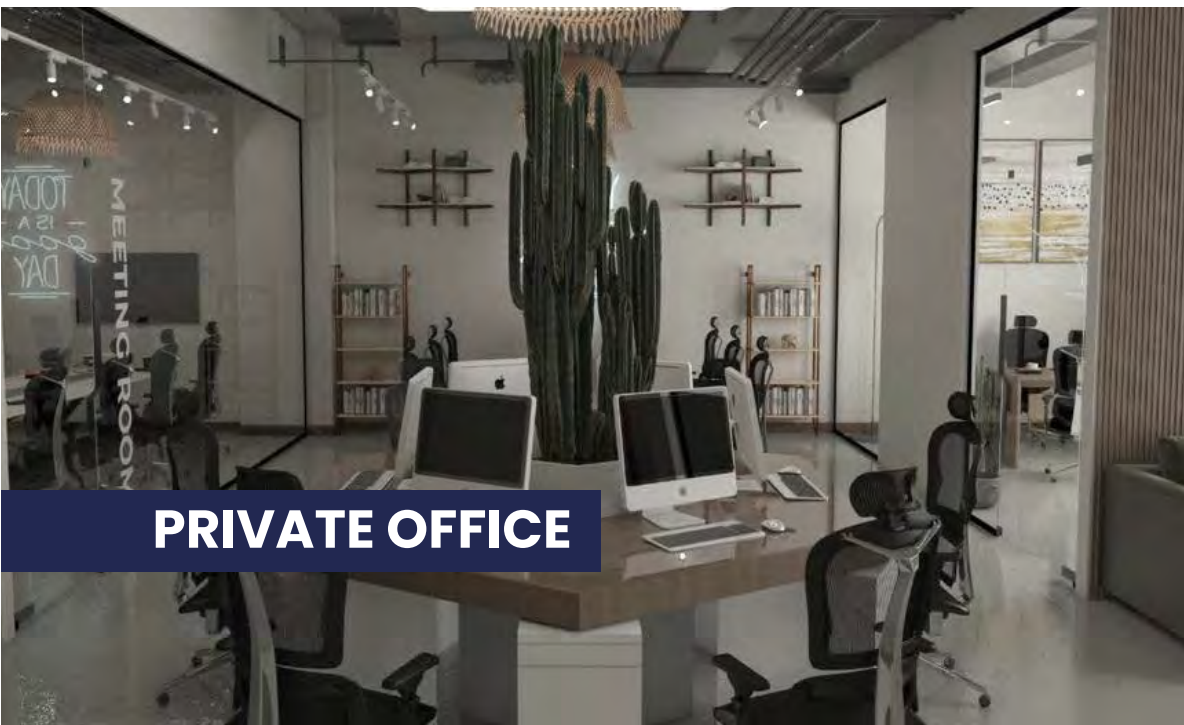


Architect and Design Works





Architect and Design Works



PRIVATE OFFICE





Architect and
Design Works



ROASTING HOUSE





Architect and Design Works



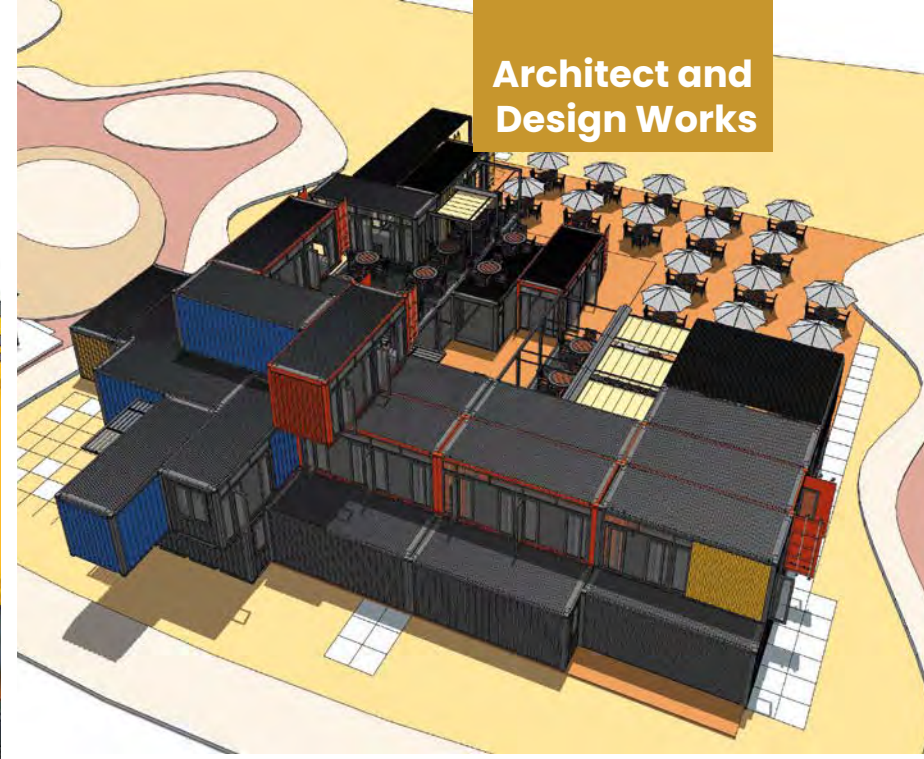


Architect and
Design Works



KARMANTIN





Architect and
Design Works



ANCLA BEACH CLUB





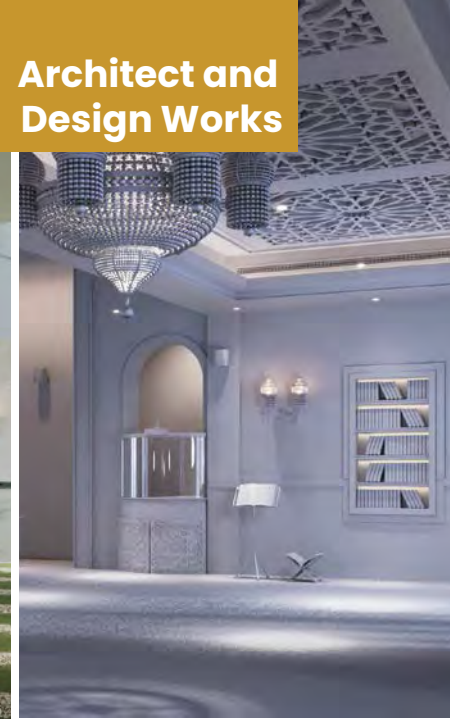
Architect and
Design Works



BATATA BATATA

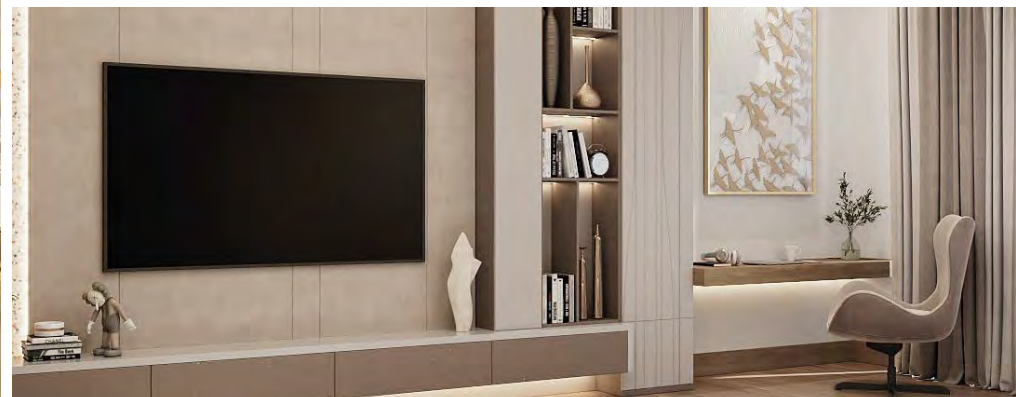


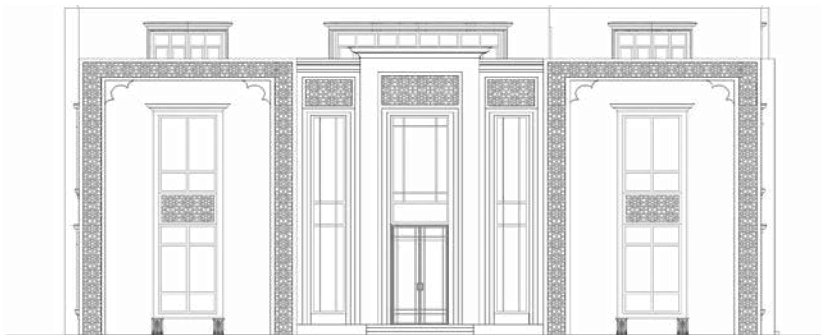
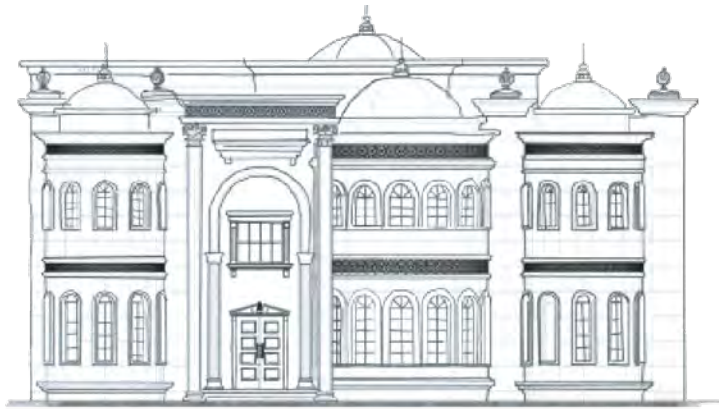
**Architect and
Design Works**

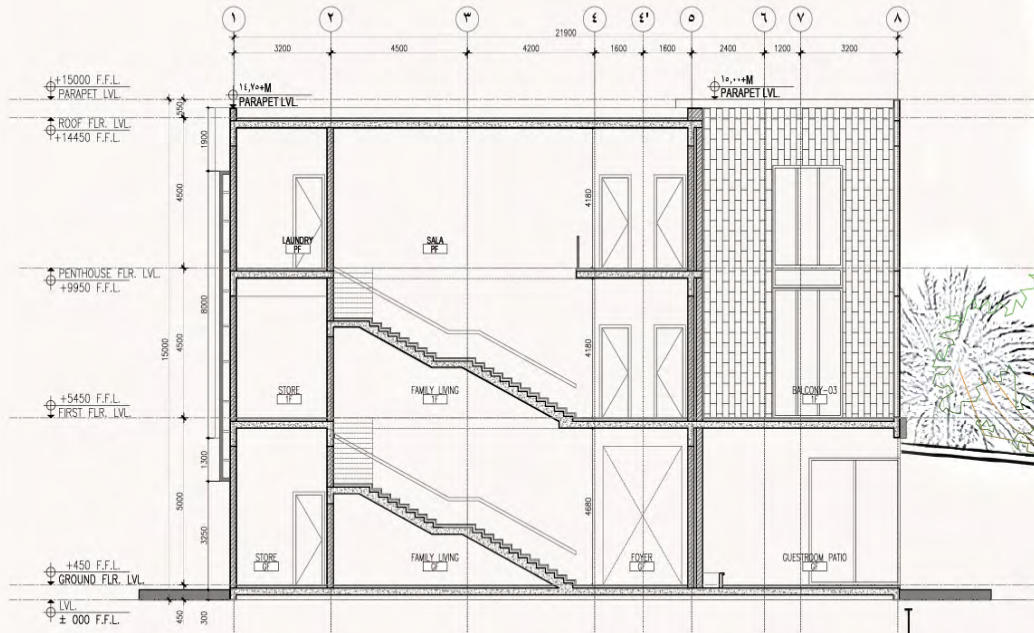




Architect and Design Works







Industrial Sector – Steel Structure & Aluminum Works



QIDDIYA PROJECT

PROJECT DETAILS:

Client: QIDDIYA
Contractor: BU-JV
Location: RIYADH, KSA
Scope of Service: DESIGN & BUILD

DESIGN AND BUILT MOCAB AREA FOR
WATER PARK HOTEL FOR A QUANTITY
OF 450 M² IN RIYADH





DIRIYAH OFFICES

- Client:** UCC-SAUDI
- Project Area:** 7300 M²
- Location:** DIRIYAH, KSA
- Scope of Service:** OFFICES STEEL STRUCTURE



RAS QASBAH PROJECT

- Client:** BIN ZAFRAH HOLDING COMPANY
- Project Area:** 540,000 M²
- Location:** NEOM, RAS QASABAH, KSA
- Scope of Service:** OFFICES STEEL STRUCTURE



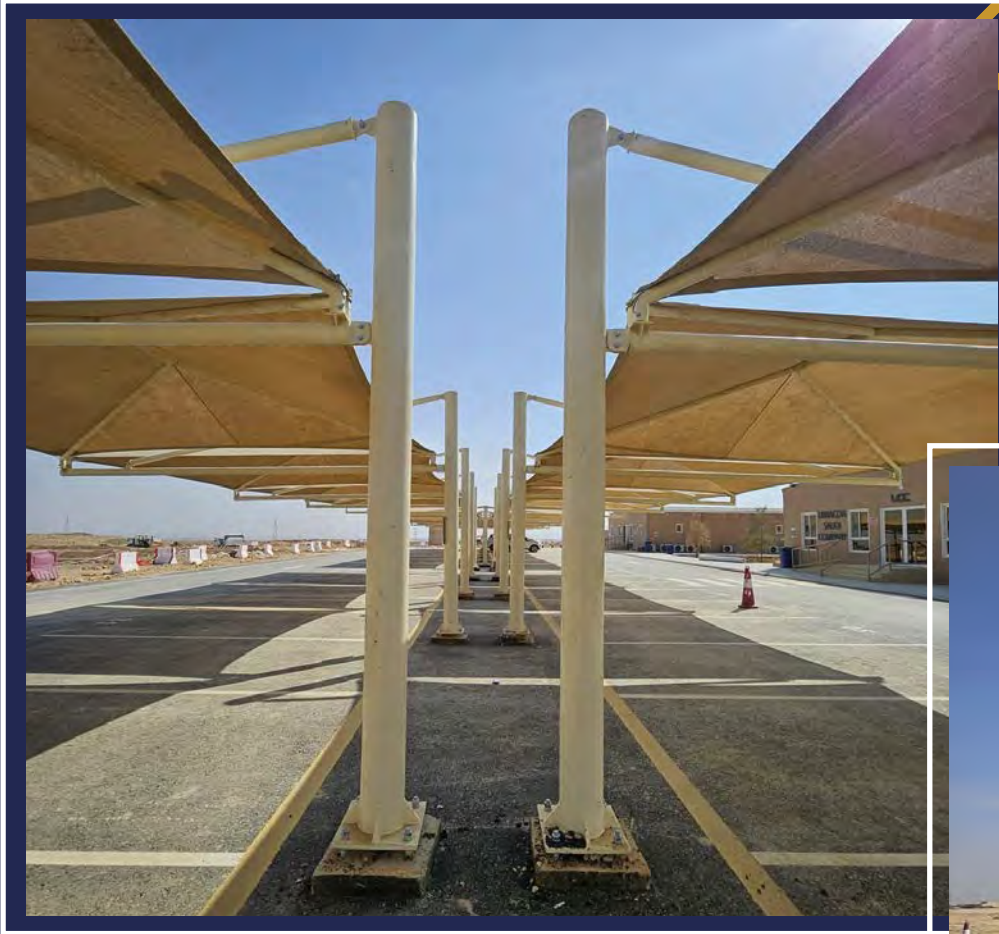
AL KHARJ FACTORY AND WAREHOUSE

Client: POULTRY COMPANY

Project Area: 2200 M²

Location: AL KHARJ, KSA

Scope of Service: OFFICES STEEL STRUCTURE



DIRIYAH PROJECT - CAR SHADES

Industrial Sector – Infrastructure Work



AL-OLAYAN COMPANY ASPHALT

Client: AL-OLAYAN HOLDING COMPANY
Project Area: 7000 M²
Location: DAMMAM, KSA
Scope of Service: INFRASTRUCTURE





W.O.17

Client: BIN ZAFRAH HOLDING COMPANY

Project Area: 30,500 m²

Location: NEOM, KSA

Scope of Service: INFRASTRUCTURE

Industrial Sector – Landscape and Hardscape Works



NEOM RESIDENTIAL VILLAGE T

Client: NEOM
Contractor: AL MAJAL AL ARABI GROUP
Location: NEOM, KSA
Scope of Service: CURBSTONE AND INTERLOCK INSTALLATION

PROJECT DETAILS:

CURBSTONE AND INTERLOCK INSTALLATION FOR A QUANTITY OF 9000 M² IN NEOM.



Industrial Sector – Waterproofing Works

Hell's kitchen Restaurants

Client: SELA
Contractor: MIA TEC
Location: RIYADH, KSA
Scope of Service: WATERPROOFING
Exterior Façade
finishing Works



PROJECT DETAILS:

HELL'S KITCHEN PROJECT SCOPE WAS SUPPLY, DELIVER, CONFIGURE, AND INSTALL WATERPROOFING SYSTEM SPRAYED FOAM POLYURETHANE SYSTEM (SPF) FOR A QUANTITY OF 1500 M² IN BOULEVARD RIYADH.

All Dining Restaurant

Client: SELA
Contractor: MIA TEC
Location: RIYADH, KSA
Scope of Service: WATERPROOFING Works

PROJECT DETAILS:

ALL DINING RESTAURANT BUILDINGS (FB10, FB11, FB12, FB13, FB14, AND FB15) PROJECT SCOPE WAS SUPPLY, DELIVER, CONFIGURE, AND INSTALL WATERPROOFING SYSTEM SPRAYED POLYURIA SYSTEM (SPS) FOR A QUANTITY OF 5000 M² IN BOULEVARD RIYADH.

Waterproofing Works



BOULEVARD WORLD

Client: SELA
Contractor: MIA TEC
Location: RIYADH, KSA
Scope of Service: WATER PROOFING
SOIL INJECTION &
SHOTCRETE WORKS

PROJECT DETAILS:

SUPPLY, DELIVER, CONFIGURE, AND INSTALL SOIL INJECTION, SHOTCRETE AND WATERPROOFING SYSTEM USING PVC, SPF AND POLUREA SYSTEM FOR A QUANTITY OF 155,000 M² IN RIYADH.

Waterproofing Works



Industrial Sector – Hangars & Tenant Works



QIDDIYA PROJECT

PROJECT DETAILS:

Client: QIDDIYA
Contractor: BU-JV
Location: QIDDIYA, KSA
Scope of Service: DESIGN & BUILD

MOCKUP AREA FOR WATERPARCK
HOTEL FOR A QUANTITY OF 450 SQ.M
IN QIDDIYA.





KHAMIS MUSHAYT SHOWROOMS

Client: BIN ZAFRAH HPLDING COMPANY
Project Area: 3400 M²
Location: KHAMIS MUSHAYT
Scope of Service: DESIGN AND BUILD



PROJECT DETAILS:

SUPPLY AND INSTALLATION
STORGE TENT FOR A QUANTITY
OF 4200 SQ.M IN UMLUJ.



RED SEA PROJECT

Client: RED SEA
Contractor: ELEGANCIA ARABIA MEP
Location: UMLUJ, KSA
Scope of Service: TENT SUPPLY AND
INSTALLATION



ROASTING HOUSE FACTORY

Client: ROASTING HOUSE TRADING COMPANY
Project Area: 1100 SQ.M
Location: RIYADH, KSA
Scope of Service: HANGAR DESIEN & BUILD

Industrial Sector – Kitchen Equipment Works



TOMOOR AL-ULA

Client: SHAR COMPANY
Project Area: 270 SQ.M
Location: RIYADH, KSA
Scope of Service: KITCHEN EQUIPMENT





Kitchen Equipment Works

MANOOSHA RESTAURANT

Client: UNIQUE HOSPITALITY COMPANY
Project Area: VARIOUS SPACES
Location: RIYADH, KSA
Scope of Service: KITCHEN EQUIPMENT




Key Management

ORGANIZATION	NAME	TITTLE
NACC	Rawad Swid	Chief Executive Office
NACC	Tamam Al Massrani	legal counsellor
NACC	Marwan Abdoh	Executive Projects Director
NACC	Aouis Alhamed	Design Director
NACC	Mohamad Mazen Al Malki	Executive Projects Director
NACC	Abeer Al Laham	International graphic design Director
NACC	Oways Al Shaghori	Technical Director
NACC	Khalid Alruqi	HR Manager
NACC	Lubna Al Shaghori	Marketing Manager
NACC	Yamen Swid	Logistic & Warehouse Manager
NACC	Raed Abdulsalam	Technical Procurement Director
NACC	Dana Al majed	HSE Manager
NACC	Anan Shabello	Senior Construction Manager
NACC	Abdulkader Hasan Alsalahi	QAQC Manager
NACC	Mohammed Refaat	Commercial & Financial Director
NACC	Ahmed Maher Shaqaqi	Planning Director
NACC	Modar Espir	Project Engineer Manager
NACC	Kevin Maktabi	General Manager Sweden Branch
NACC	Anas Kholandi	General Manager Syria branch
NACC	Jalal Rihawi	General Manager UK Branch


NACC Manpower

PROFESSION	COUNT
ENGINEERS	56
OFFICE STAFF	106
SITE SUPERVISORS	63
FOREMAN	76
WATERPROOFING SHEET MEMBRANE & TORCHERS	31
LABORS	2600
MARBLE AND TILING	36
DRIVER	43

Strategy partners- manpower



PROFESSION	COUNT
ENGINEERS	316
LABOR	6800



NACC Equipment and Machinery

EXCAVATOR	43
BULLDOZER	26
LOADER	30
DUMP TRUCK	60
GRADER	24
ROLLER COMPACTOR	32
BACKHOE LOADER	25
ASPHALT PAVER	22
SKID LOADER	28
FORKLIFT	24
WATER TANK	34
DIESEL TANK	23
MAINTENANCE VEHICLE	21
CRUSHER	4
GENERATOR	22
AIR COPRESSOR XA 186	21
AIRLESS MACHINE AIR BLAST	19
AIRLESS MACHINE AIR GRACO	20
ASPHALT CUTTER	20
BOBCAT LOADER	19
CEMENT INJECTION	21
SPRY MACHINE	20
EPOXY MIXER	23
JOINT CUTTING MACHINE	21
SAND BLAST	19
VACUUM CLEANING	21
WELDING MACHINE	20





**Government & Trade Licenses
Commercial & Legal Documents**



Bolagsverket

851 81 Sundsvall
0771-670 670
bolagsverket.se

Registreringsdatum 2024-11-09
Ärendenummer 601891/2024
1 (3)

RAWAD SWID

Företagsnamn: NACC-New Advanced Contracting Company AB
Organisationsnummer: 559287-9620

Vi har registrerat följande ärende

Bolagsverket har registrerat detta ärende om
- företagsnamn
- bolagsordning

Bolagsverket

851 81 Sundsvall
0771-670 670
bolagsverket.se

Bevis
Beviset skapat
2024-11-09, kl.11.13

Organisationsnummer 2 (3)
559287-9620

Registreringsbevis

Aktiebolag

Organisationsnummer
559287-9620

Objektets registreringsdatum
2020-12-07

Företagsnamn
NACC-New Advanced Contracting Company AB

Företagsnamnets registreringsdatum
2024-11-09

Postadress
Rawad Swid, Kummelgatan 142, 253 60 RAMLÖSA

E-postadress
rawad.swid@hotmail.com

Säte
Örebro län, Hallsberg kommun

Detta är ett privat aktiebolag.

Bildat datum
2020-11-11

Sammanställning av aktiekapital

Aktiekapital:	25.000 SEK
Lägst:	25.000 SEK
Högst:	100.000 SEK

Antal aktier:	500
Lägst:	500
Högst:	2.000

Styrelseledamöter
801030-1292 Swid, Rawad, Kummelgatan 142, 253 60 RAMLÖSA

Styrelsesuppleanter
910104-7661 Al Shaghori, Lubna, Kummelgatan 142, 253 60 RAMLÖSA

Bolagsverket

851 81 Sundsvall
0771-670 670
bolagsverket.se

Bevis
Beviset skapat
2024-11-09, kl.11.13

Organisationsnummer 3 (3)
559287-9620

Firmateckning

Firman tecknas av styrelsen

Föreskrift om antal styrelseledamöter/styrelsesuppleanter

Styrelsen skall bestå av lägst 1 och högst 10 ledamöter
med högst 10 suppleanter.

Bolagsordning

Datum för senaste ändringen: 2024-10-25

Förbehåll/avvikelser/villkor i bolagsordningen

Bestämmelse att företaget inte behöver ha revisor

Verksamhet

Bolaget bedriver byggnadsrörelse och därmed förenlig verksamhet.
Bolaget bedriver fastighetsförvaltning och fastighetsservice
samt renovering av dessa. Bolaget skall bedriva konsultverksamhet

Räkenskapsår

0101 - 1231

Kallelse

Kallelse sker genom brev eller e-post.

Tidigare företagsnamn

2020-12-07 A.M. Ädelstenarna AB

Registreringsbeviset är skapat av Bolagsverket.

Notarius Publicus Malmö

APOSTILLE

(Convention de La Haye du 5 octobre 1961)

1. Country: Sweden
This public document
2. has been signed by: n/a
3. in the capacity of: n/a
4. bears the seal/stamp of the Swedish Companies Registration Office.

Certified

5. at the City of Malmö
6. this 25th day of November 2024
7. by Kristian Jönsson, Notary Public of the City of Malmö.
8. No. 342106
9. Seal/stamp:
10. Signature:



وزارة التجارة
Ministry of Commerce

شهادة السجل التجاري

شركة نيو أدفانسد للمقاولات

البيانات الأساسية للسجل التجاري



7051318322

الرقم الوطني الموحد: 7051318322

تاريخ الإصدار: 24/08/2025

نوع الكيان: شركة ذات مسؤولية محدودة

صفات الشركة: (شخص واحد)

حالة السجل: نشط

@%f
mcgovsa

1900
mc.gov.sa

وزارة التجارة
Ministry of Commerce

Commercial Registration Certificate

New Advanced Company For Contracting

Basic data of the commercial register



7051318322

National Number : 7051318322

Release date : 24/08/2025

Entity Type Company Limited liability
: company

Company Characteristics : (One person)

Status : Active

1900
mc.gov.sa

@%f
mcgovsa



شهادة اشتراك
Membership Certificate

غرفة الرياض
Riyadh Chamber

Membership No. :	1177214	1177214	رقم العضوية الموحد :
Date of Issue:	24/08/2025	2025/08/24	تاريخ الاصدار:
Membership Class :	Sixth	السادسة	درجة العضوية :
Riyadh Chamber Certifies			تشهد الغرفة التجارية الصناعية بالرياض بأن
New Advanced Company			شركة نيو أدفانسد
Commercial Registration No.	7051318322	7051318322	مقيدة بالسجل التجاري / الترخيص رقم :
National Number	7051318322	7051318322	الرقم الموحد :
Certificate Expires on	23/08/2026	2026/08/23	ينتهي سريان هذه الشهادة في



الخدمات الإلكترونية لغرفة الرياض - بوابة أعمال © E-Services Riyadh Chamber

920004565



عام الحرف
اليدوية 2025
The Year of Handicrafts

- يلزم التحقق من الوثيقة عبر الرابط التالي / <https://mybusiness.chamber.sa/> او تطبيق (بوابة أعمال) للهواتف الذكية دون أدنى مسؤولية على الغرفة التجارية عن محتوى الوثيقة.
- تعتبر هذه الوثيقة مصدقة من غرفة الرياض ولا تحتاج الى توقيع او ختم.
- عند التعديل على الوثيقة او محاولة العبث بها تعتبر لاغية وتعرض صاحبها للمسائلة القانونية.



TIN: 314154927
Certificate No: 19023149137259
Certificate date: 25/08/2025



هيئة الزكاة والضريبة والجمارك
Zakat, Tax and Customs Authority

المملكة العربية السعودية
Kingdom of Saudi Arabia

شهادة تسجيل في ضريبة القيمة المضافة VAT Registration Certificate

شهادة هيئة الزكاة والضريبة والجمارك بأن المصنف أدناه مسجل في ضريبة القيمة المضافة بتاريخ 25/08/2025 AD
The Zakat, Tax and Customs Authority certifies that taxpayer below is VAT registered on 25/08/2025 AD

Taxpayer Name	New Advanced Company	اسم المصنف
VAT Registration Number	31415492700003	رقم التسجيل الضريبي
Effective Registration Date	2025/09/01	تاريخ بدء التسجيل
Taxpayer Address	12253 الأمير أحمد بن عبدالعزيز، Riyadh, Al Woroud Dist	عنوان المصنف
CR / License	7051318322	رقم الترخيص التجاري / الرخصة / العقد / الهوية
Tax Period	Quarterly - ربع سنوي	الفترة الضريبية
First Filing date	2025/10/31	تاريخ استحقاق أول إقرار ضريبي

ملاحظة: مصنفون مسجلين في ضريبة القيمة المضافة، لا يجوز لهم تحميل ضريبة القيمة المضافة من عملائهم قبل تاريخ بدء التسجيل في الضريبة، وفي حال تبين غير ذلك سكتقوم هيئة الزكاة والضريبة والجمارك بتطبيق العقوبات المستحقة.

Note: As a VAT registered taxpayer, you are not allowed to collect VAT from your customers prior to the effective date of the tax registration. If otherwise approved, The ZARAT, Tax and Customs Authority will impose the applicable penalties.



ضريبة القيمة المضافة
VAT



صفحة الوزارة مسكونة من برنامج الضلي وه لا تحتاج إلى توثيق
و لا يحدو بركات الشهادة إلا بعد التحقق من مواقع الهيئة
www.zatca.gov.sa

zatca.gov.sa 19993 @zatca_sa



TIN: 314154927
Certificate No: 19023149137259
Certificate date: 25/08/2025



هيئة الزكاة والضريبة والجمارك
Zakat, Tax and Customs Authority

المملكة العربية السعودية
Kingdom of Saudi Arabia

شهادة تسجيل الزكاة Zakat Registration Certificate

The Zakat, Tax and Customs Authority certifies that the Taxpayer is registered in the Zakat system.

The Zakat, Tax and Customs Authority certifies that the Taxpayer is registered in the Zakat system.

New Advanced Company

Enity/Ident No./ID No: 7051318322

Is registered at 01/03/1447 AH corresponding to 24/09/2025 AD
(The first of Rab' al-siniwul one thousand four hundred forty-seven 1999)
مسجل لديها بتاريخ 1447/03/01 هـ الموافق 2025/09/24 م
(الأول من ربيع الأول ألف واربعمائة وستة و أربعون هجرياً)

Was granted this certificate to complete all transactions.
و قد منح هذه الشهادة لإنهاء جميع معاملاته.

يمكن التحقق من صحة الشهادة عن طريق الهيئة www.zatca.gov.sa
The validity of the certificate can be verified via the Authority's Website www.zatca.gov.sa



ضريبة القيمة المضافة
VAT



صفحة الوزارة مسكونة من برنامج الضلي وه لا تحتاج إلى توثيق
و لا يحدو بركات الشهادة إلا بعد التحقق من مواقع الهيئة
www.zatca.gov.sa

zatca.gov.sa 19993 @zatca_sa



Proof Number: 1070543974
Original Date: 25/8/2025
Expiration Date: 25/2/2026



العنوان الوطني
NATIONAL ADDRESS

إثبات عنوان Address Proof

Address Holder Details

Name: New Advanced Company
Customer No: 3 1 3 3 3 3 2 1 5 8 7 9
Reg. Date: 25/8/2025

بيانات صاحب العنوان

Name: شركة نيو المتقدمة
Customer No: 3 1 3 3 3 3 2 1 5 8 7 9
Reg. Date: 25/8/2025

Address Details

Short Address: R H W A B - O 4 4 4
Building No: 8 0 4 4 6
Secondary No: 3 0 4 4
Postal Code: 1 2 2 5 3
City: RIYADH
Kingdom of Saudi Arabia

تفاصيل العنوان

العنوان المختصر: R H W A B - O 4 4 4
رقم المبنى / الشارع: 8 0 4 4 6
رقم الكمية: 3 0 4 4
الرمز البريدي: 1 2 2 5 3
المدينة: الرياض
المملكة العربية السعودية



To Verify للتحقق

<https://app.zatca.gov.sa/verify/address>

تم إصدار هذا الإثبات إلكترونياً ولا يتطلب التوقيع عليه
This proof has been issued electronically and does not require a signature
This proof has been issued upon the request of the above named, and it is absolutely prohibited to make any modification to it, whether by addition or deletion, and the proof is considered void if it is marked by something, and its owner is subject to legal accountability.

19993 <https://app.zatca.gov.sa/verify/address>



<https://dvs.alinma.com>

خدمات الشركات
Corporate Services



شهادة بيانات العميل

0901000004be8f0c

الرقم المرجعي

Ref No

Rawad Swid

الساده

تحية طيبه ...

As requested by our customer

بناء علي طلب عميلنا

Customer information

بيانات العميل

Customer name	Xiaoniu Adfansd Llmqawlat Company-شركة نيو أدفانسد للمقاولات													إسم العميل											
Customer ID	7	0	5	1	3	1	8	3	2	2	رقم السجل التجاري														
The account Number	6	8	2	0	6	7	9	5	4	8	4	0	0	0	رقم الحساب										
IBAN Number	S	A	8	1	0	5	0	0	0	0	6	8	2	0	6	7	9	5	4	8	4	0	0	0	رقم الحساب البنكي الدولي

To check the validity of this document, please visit the following link:

<https://dvs.alinma.com>

للتحقق من صحة هذه الوثيقة الرجاء زيارة الرابط التالي: <https://dvs.alinma.com>



رقم التسجيل (67616)

غرفة تجارة دمشق

شهادة عضوية لعام

2025



الرقم المتسلسل : (21560)

إن غرفة تجارة دمشق بناء على أحكام القانون رقم ٨ لعام ٢٠٢٠م

قد سجلت :

شركة الجديدة المتقدمة للمقاولات ان . اي . سي . سي المحدودة المسؤولة N.A.C.C L.L.C New Advanced Contracting

من الجنسية السورية في الدرجة الثالثة على العنوان كفسوسة

410010/ تشييد المباني السكنية بأنواعها /410020/ تشييد المباني غير السكنية بأنواعها (المصالح ، المدارس ، المباني الحكومية ، المطارات و مواقفها) /410041/ إعادة تأهيل أو ترميم المباني غير التاريخية /410042/ إعادة تأهيل أو ترميم المواقع و المباني التاريخية /431100/ هدم المباني و غيرها من الهياكل و رفع الأبناس /4330/ إكمال المباني و تشطيبها /421010/ إنشاء و إصلاح الطرق السريعة و الشوارع و الطرق و غيرها من طرق السيارات و المشاة /421020/ أعمال تعبيد و رصف الشوارع و الطرق السريعة و الجسور و الأنفاق /421030/ تشييد و إصلاح الجسور بما في ذلك جسور الطرق السريعة المعلقة - /829904/ خدمات ما بعد البيع (تركيب صيانة - اصلاح) - /461051/ أنشطة الاستيراد و التصدير للتجهيزات و المواد و المعدات المرتبطة بالمنشأة /461052/ أنشطة الاستيراد و التصدير غير المخصصة (ل مواد البناء - للإسمنت و الجبسين بأنواعه- للمواد الإنشائية التعدينية غير المعنوية - للمواد الإنشائية المعنوية- للأدوات الحديدية و الأقفال - للأبواب المعدنية الحديدية- الآلات و معدات التشييد و البناء و الهندسية المدنية- للبلوك و البلاط و الحجر و الرخام و السراميك و البورسلان -لأصباغ و الورنيش و المواد العازلة لحرارة الحائط و أغطية الأرضيات(المشمع) و أكياس النايلون- لأسقف الصناعية المعدنية و الأبواب و الشبابيك و المصنوعات المعدنية لأكسسوارات المعنوية-للحديد المبروم و حديد البناء-المواد الإنشائية المعنوية- /465993/ البيع بالجملة لآلات و معدات التشييد و البناء و الهندسة المدنية /466321/ البيع بالجملة للأدوات الحديدية و الأقفال- /466322/ البيع بالجملة للأبواب المعدنية الحديدية- /466331/ البيع بالجملة للإسمنت و الجبسين بأنواعه- /466332/ بيع مواد البناء بالجملة (الرمال و الحصى) - /466333/ البيع بالجملة للبلوك و البلاط و الحجر و الرخام و السيراميك و البورسلان- /466334/ البيع بالجملة لأنواع الزجاج - /466335/ البيع بالجملة لمنتجات و مشغولات خشبية لازمة لأعمال البناء- /466335/ البيع بالجملة للأصباغ و الورنيش و المواد العازلة- /466360/ البيع بالجملة لورق الحائط و أغطية الأرضيات (المشمع) و أكياس النايلون- /466370/ البيع بالجملة للأسقف الصناعية المعدنية و الأبواب و الشبابيك و المصنوعات المعدنية- /466381/ البيع بالجملة لأكسسوارات المعدنية كإكسسوارات الأقفال و علاقات الملايس و المفصلات و غيرها - /466382/ البيع بالجملة للعدد و الأدوات اليدوية و الخردوات - /466231/ البيع بالجملة للحديد المبروم و حديد البناء ، و الدخول بالمنقصلت و المزاريب مع القطاع العام و الخاص و المشترك و تنفيذ الشركات و الوكالات فيما يخص غاية الشركة

رئيس غرفة تجارة دمشق

عصام زهير الغريواتي



اعطيت هذه الوثيقة بتاريخ 11/09/2025

IMS –QHSE POLICY AND POROCEDURE



INTER – OFFICE MEMO

BU/DEPT/PROJECT NAME	CEO Office	Project Code	CEO/Office
REFERENCE NO	NACC/POL/V.00		
DATE	Jan 2024		
TO	All NACC		
FROM	Mr. Rawad Swid – Chief Executive Officer		
CC	Executive Director / Operational Director		
SUBJECT	IMS – QHSE Policy and Procedure		

Dear Team,

I hope this memo finds you well. I am writing to inform you about an important aspect of our company operations: the IMS, Quality, Health, Safety, and Environment (QHSE) policy. This policy outlines our commitment to ensuring the highest standards in every aspect of our work, prioritizing the well-being of our employees, contractors, customers, and the environment.

Overview of IMS & QHSE Policy:

- Quality:** We are dedicated to delivering products and services that meet or exceed our customers' expectations. Continuous improvement and adherence to industry standards are integral to achieving this goal. **NACC/POL/QM/001 V.00.**
 - Health:** The health and well-being of our employees are of utmost importance. We strive to provide a safe and healthy work environment through regular training, risk assessments, and proactive measures. **NACC/POL/OHS/002 V.00.**
 - Safety:** Safety is non-negotiable. We aim for zero harm in all our operations by identifying hazards, implementing effective controls, and fostering a culture where safety is everyone's responsibility. **NACC/POL/OHS/002 V.00.**
 - Environment:** We are committed to minimizing our environmental footprint. This includes reducing waste, conserving resources, and complying with applicable environmental regulations. **NACC/POL/EM/003 V.00.**
- 5. Integrated Management System:**
- New Advanced Contracting Company (NACC) aligns its processes to achieve compliance with management systems by implementing and maintaining an Integrated Management System (IMS), which forms an integral part of the company's business strategy and that shall meet the requirements of ISO 9001:2015, ISO 14001:2015 and ISO 45001:2018. **NACC/POL/IMS/004 V.00.**



Your Role:

Each one of us plays a crucial role in upholding our QHSE standards. It is important to familiarize yourself with our QHSE policy, which can be found in detail on our company intranet or obtained from your supervisor. By understanding and adhering to these guidelines, we contribute to a safer, healthier, and more sustainable workplace.

Reporting:

If you observe any QHSE concerns or have suggestions for improvement, please report them to your supervisor or the QHSE officer promptly. Your feedback is invaluable in helping us maintain our high standards and achieve continuous improvement.

Conclusion:

By embracing our QHSE policy, we not only fulfill regulatory requirements but also demonstrate our commitment to excellence and responsibility. Let's work together to make QHSE a part of everything we do, ensuring a positive impact on our company and community.

Thank you for your attention to this matter. Should you have any questions or need further clarification, please do not hesitate to reach out.

Soon we will arrange a training session and you will be informed about the date of training by another memo.

Best regards,

Mr. Rawad Swid

Chief Executive Officer

NACC – New Advanced Contracting Company





POLICY AND PROCEDURE

NACC/POL/V.04

- **QUALITY POLICY STATEMENT:**
- **OCCUPATIONAL HEALTH & SAFETY:**
- **ENVIRONMENTAL MANAGEMENT:**
- **INTEGRATED MANAGEMENT SYSTEM:**



APPROVALS

This section shows the approval/ authorization of this policy and procedure. This also shows the commitment of Top Management. Approval of this documented information consists of 3 stages as indicated preparation, review & approval.

This documented information is prepared by HSE Manager and Quality Manager, reviewed by Operation Director, and approved by Chief Executive Officer.

The table given below will indicate the signature, title, name & date of approval.

Control	Signature	Title	Name	Date
Prepared by		HSE Manager	Mr. Dana Al Majid	03-Jan-24
Prepared by		Quality Manager	Mr. Abdulqader Salhani	06-01-2024
Approved by		Planning Director	Mr. Maner Shaqqa	08 Jun 24
Approved by		Commercial and Financial Director	Mr. Mohammad Refat	09-Jun-24
Approved by		Executive Director	Mr. Marwan Abdo	10-Jan-24
Approved by		CEO	Mr. Rawad Swid	10-1-24



QUALITY POLICY STATEMENT

This quality policy statement is owned by the New Advanced Contracting Company (NACC). Top management and sets out our commitment to quality management across the company.

At NACC, management takes responsibility of managing quality seriously and every staff member has the responsibility to ensure that the intentions of this policy statement are understood, applied and maintained within their own activity areas. NACC management have outlined and documented the following commitments with respect to quality.

To accomplish the corporate vision of this company by offering world class, technologically advanced and reliable products and services to the best satisfaction of the customers.

Improve competitiveness and profitability through continual improvement in quality of products, processes, systems, and after-sales-service.

To use the disciplines of ISO 9001 to develop and maintain the processes needed to produce a level of a consistent standard of quality deliverable and to make quality management an integral part of normal business activities.

Document and measure quality objectives and targets through external audit and management review, to make continual improvement against specific quality KPI's.

Strive to foster and build well trusted, sustainable relationships with clients, customers, suppliers and our people.

Comply with and continually improve the effectiveness of our quality management system in accordance with ISO 9001:2015.

To use a risk-based approach to address the requirements of the business both internally and externally.

Deliver products and services in accordance with the specifications and requirements of our clients.

To strive to continually improve our services provided to Clients, using the Quality Policy, quality objectives, performance evaluations including audit results, corrective actions and Management Review.

To use channels of communication to encourage all employees to contribute to improvements in our quality performance.

Ensure that all specified standards as well as any statutory or regulatory requirements are strictly adhered to.

This policy is communicated to all interested parties, periodically reviewed as part of the review of the overall Quality Management System to establish its stated objectives that are measurable and assessed so that this policy continues to be suitable for the needs of NACC, its customers and employees.

Rawad Swid
Chief Executive Officer
Date: Jan 2024

NACC/POL/QM001/04



OCCUPATIONAL HEALTH & SAFETY

At New Advanced Contracting Company (NACC), Occupational Health and Safety extends beyond a written policy and is considered at the heart of NACC core business values. Our safety values are underpinned by a sharp and definite focus on 100% Health and Safety, consistent with our commitment to keeping employees, environment, and assets safe from any potential harm.

This vital health & safety culture shall permeate within NACC at all levels where employees think and consider "safety first". It is the policy of NACC to conduct its activities in a systematic approach to the management standards (ISO 45001:2018) applied and thus the organization is committed to:

Comply with all laws, regulations and Government guidelines in force and work with the industry HSE standards and guidelines.

Implementing the Health and Safety procedures, plans and regulations conducting regular HSE meetings.

Take all measures to ensure that the work environment is caring and safe. Our people regularly participate in safety training, with field staff completing comprehensive training specific to their work prior to heading into the field.

Ensuring conformity of all stakeholders (contractors and subcontractors to the HSE standard and regulations).

Protect the health and safety of its employees, subcontractors, suppliers, and any other stakeholder involved in the company business as well as the community in the areas where the company conducts its business.

HSE requirements shall be clearly demonstrated, properly fulfilled, strictly applied and frequently inspected at sites.

Prevent the incidents by implementing required level of controls assessed through systematic analysis.

Ensuring all incidents and accidents within HSE regulation requirements shall be reported and investigated.

Ensuring all warning and caution signs shall be clearly presented and carefully illustrated.

Ensuring that employees, facilities, equipment and all who are working under supervision are fully in compliance with HSE standards and governmental regulations.

Encourage employees to work safely and empower all involved in the operation to stop unhealthy, unsafe or environmentally damaging activities.

This policy is communicated to all interested parties, periodically reviewed for continual improvement and to establish its stated objectives that are measured and assessed so that this policy continues to be suitable for the needs of NACC, its stakeholders, and employees.

Rawad Swid
Chief Executive Officer
Date: Jan 2024

NACC/PO/001/001/001



ENVIRONMENTAL MANAGEMENT

New Advanced Contracting Company (NACC) shall continue its activities with the awareness of their responsibilities towards society and the environment. In line with national and international environmental rules and regulations, we aim for continuous improvement to effectively manage the environmental impacts of our activities. Our efforts are guided by the ISO 14001:2015 Environmental Management System and that shall be achieved by the following objectives:

Comply with national and international rules and regulations regarding the Environment and go beyond regulatory obligations to develop innovative practices.

Reduce our negative impact on the environment and continuously review our environmental policy to improve our environmental performance.

Ensure that our environmental policy is monitored and audited in line with our Environmental Management System.

Support conservation and consume energy, water, and materials efficiently to help protect natural resources.

Measure our environmental performance through goals, targets, KPIs and report the results.

Encourage responsible environmental management by communicating with all stakeholders and we receive their opinions about our activities.

Increase the sense of responsibility by providing environmental training to our employees.

Minimize Greenhouse gas emissions by using energy efficiently and practice production models to support the transition to low-carbon economy to contribute to the fight against climate change.

Reduce air emissions other than Greenhouse gases.

Reduce waste at the source as much as possible; apply recycling techniques and provide the necessary human, technology, and financing resources to dispose of waste in an environmentally friendly manner.

Promote the protection and enhancement of biodiversity and ecosystems through employee awareness programs and stakeholder engagement.

This policy is communicated to all interested parties, periodically reviewed for continual improvement and to establish its stated objectives that are measured and assessed so that this policy continues to be suitable for the needs of NACC, its stakeholders and employees.

Rawad Swid
Chief Executive Officer
Date: Jan 2024

NACC/PO/EM/001/001/001



INTEGRATED MANAGEMENT SYSTEM

New Advanced Contracting Company (NACC) aligns its processes to achieve compliance with management systems by implementing and maintaining an Integrated Management System (IMS) which forms an integral part of the company's business strategy and that shall meet the requirements of ISO 9001:2015, ISO 14001:2015 and ISO 45001:2018.

We are fully committed to satisfy our customers' requirements, providing a safe and environmentally friendly environment for employees, contractors, visitors and others having access to our workplace and to comply with all relevant laws and regulations to achieve our Vision and carry out our Mission.

At NACC, Quality, Environmental, Health and Safety & Customer Satisfaction are viewed as core business values and shall be achieved by following objectives:

Maintaining a focus on understanding the needs of our customers by continuously striving to exceed their expectations and by building strong ongoing relationships.

Delivery of business commitments through safe and healthy business processes that protect the lives of our valued customers, employees, and visitors with a maximum elimination of any occurrence of health and safety related risks or hazards.

Provide appropriate training, management, and resources to develop control measures and minimize risk.

Adherence and compliance to the regulations and the legal requirements of the Environment, Health, and Safety.

Managing the customers' complaints efficiently and independently, to ensure their recurrence in future and to drive the improvement process.

Engagement and consultation with the concerned parties on health and safety issues and methods to ensure knowledge, assessment, and monitoring of workplace risks.

Ensuring the health, safety and welfare of our employees, customers and any other persons that could potentially be harmed by our business activities, products, and operations.

Designing products to be as environmentally friendly as possible and sourcing raw materials from responsibly managed and environmentally aware organizations.

NACC is a quality system driven organization that seeks to continuously improve all aspects of the business by actively encouraging worker participation, teamwork and customer feedback.

Raising the awareness of all our employees in order that the benefits of meeting QHSE objectives are understood.

Continually improve our systems by recognizing and adopting best practice and by proactively promoting innovation and excellence across the organization.

This policy is communicated to all interested parties and is periodically reviewed to ensure it continues to be suitable for the needs of NACC, its customers and employees.

Rawad Swid
Chief Executive Officer
Date: Jan 2024

NACC/PO/IMS/001/001/001

Certification of Completion Work



INITIAL TAKING-OVER CERTIFICATE

Certificate Date : 24-04-2024
 Sub-contract No : 49000000104 - REV - 00
 Project title : Supply, delivery, three Storage Tent of 3X 20m x 70m (4,200M2)
 Project Location : Umluj, KSA
 Customer/Client : Red Sea
 Contractor : ELEGANCIA ARABIA COMPANY W.L.L.
 Address : 3029 Al Oruba Road, Al Sulaymaniyah District, 12245-8347 Riyadh KSA

Subcontractor : NACC (New Advance Contracting Company)
 Address : Al kifah, Alyasmin, Riyadh 13325, Saudi Arabia

Part I

Scope of Works or specified part shall include, SUPPLY AND INSTALLATION OF THREE STORAGE TENT 20 MTR X 70 MTR = 1,400 SOM FOR 3 TENT COMPLETE WITH FLOOR BLINDING RENFORCEMENT CONCRETE AND FOUNDATION RENFORCEMENT CONCRETE AND LIGHTING ETC. (3 TENTS) As per Red sea Specifications .

Part II

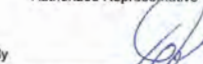
The above works have been completed as red sea approved in accordance with the provisions of Work Order and are now handed over initially to ELEGANCIA ARABIA

The Subcontractor Work performed under this Subcontract have been inspected by authorized representatives of the Contractor, and the Subcontract Works (or specified part of the Subcontract Agreement, as indicated above) are hereby declared to be initially and provisionally accepted in accordance with the Subcontract on the above date.



By  stamp
 Authorized Representative



By  stamp
 Authorized Representative


This Certificate is made in (2) Two Original Copies signed and stamped by both parties. And The Second party has received his original copy



A list of minor items to be completed or corrected is appended hereto. This list may not be exhaustive, and the failure to include an item on it does not alter the responsibility of the Subcontractor to complete all the works in accordance with the Subcontractor.


The Subcontractor accepts this Certificate of Initial and Provisional Acceptance of the Subcontract Works and agrees to fulfill his remaining contractual obligations within the times respectively indicated in the Subcontract.



By  stamp
 Authorized Representative

First Party Contractor



By  stamp
 Authorized Representative

Second Party Subcontractor

This Certificate is made in (2) Two Original Copies signed and stamped by both parties. And The Second party has received his original copy.



INITIAL TAKING-OVER CERTIFICATE

Certificate Date : 18-09-2024
 Sub-contract No : 613B(EA.0023)/(New Advance Contracting Company/4900014498)
 Project title : SUPPLY, ISNTALLATION TESTING AND COMMISSIONING OF FENCING WITH DOORS, BACKFILLING, GRADING, LEVELING, WATERING AND COMPACTION OF PLOTS FOR STORAGE YARD Works for MEP WORKS AT HOTEL CENTRAL HC 1 TAIL SHURA ISLAND in Kingdom of Saudi Arabia.
 Project Location : Umluj, KSA
 Customer/Client : RED SFA
 Contractor : ELEGANCIA ARABIA COMPANY W.L.L.
 Address : 3029 Al Oruba Road, Al Sulaymaniyah District, 12245-8347 Riyadh KSA

Subcontractor : NACC (New Advance Contracting Company)
 Address : Al kifah, Alyasmin, Riyadh 13325, Saudi Arabia

Part I

Scope of Works or specified part shall include, SUPPLY, ISNTALLATION TESTING AND COMMISSIONING OF FENCING WITH DOORS, BACKFILLING, GRADING, LEVELING, WATERING AND COMPACTION OF PLOTS FOR STORAGE YARD Works for MEP WORKS AT HOTEL CENTRAL HC 1 TAIL SHURA ISLAND in Kingdom of Saudi Arabia. As per Red Sea Specifications .


Part II

The above works have been completed as red sea approved in accordance with the provisions of Work Order and are now handed over initially to ELEGANCIA ARABIA



By  stamp
 Authorized Representative



By  stamp
 Authorized Representative

This Certificate is made in (2) Two Original Copies signed and stamped by both parties. And The Second party has received his original copy.



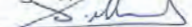
The Subcontractor Work performed under this Subcontract have been inspected by authorized representatives of the Contractor, and the Subcontract Works (or specified part of the Subcontract Agreement, as indicated above) are hereby declared to be initially and provisionally accepted in accordance with the Subcontract on the above date.

A list of minor items to be completed or corrected is appended hereto. This list may not be exhaustive, and the failure to include an item on it does not alter the responsibility of the Subcontractor to complete all the works in accordance with the Subcontractor.

The Subcontractor accepts this Certificate of Initial and Provisional Acceptance of the Subcontract Works and agrees to fulfill his remaining contractual obligations within the times respectively indicated in the Subcontract.



First Party Contractor

By  stamp
Authorized Representative

Second Party Subcontractor

By  stamp
Authorized Representative

This Certificate is made in (2) Two Original Copies signed and stamped by both parties. And The Second party has received his original copy.

IMS-CA-3702M Rev-01



INITIAL TAKING-OVER CERTIFICATE

Certificate Date : 18-09-2024
 Sub-contract No : 613B(EA.0007)/(New Advance Contracting Company/4900014496)
 Project title : SUPPLY, ISNTALLATION TESTING AND COMMISSIONING OF FENCING WITH DOORS, BACKFILLING, GRADING, LEVELING, WATERING AND COMPACTION OF PLOTS FOR STORAGE YARD Works for MEP Works Hotel West 04 Shura Island in Kingdom of Saudi Arabia
 Project Location : Umluj , KSA
 Customer/Client : Red Sea
 Contractor : ELEGANCIA ARABIA COMPANY W.L.L.
 Address : 3029 Al Oruba Road, Al Sulaymaniyah District, 12245-8347 Riyadh KSA
 Subcontractor : SACC (New Advance Contracting Company)
 Address : Al kifah, Alyasmin, Riyadh 13325.Saudi Arabia

Part I

Scope of Works or specified part shall include, SUPPLY, ISNTALLATION TESTING AND COMMISSIONING OF FENCING WITH DOORS, BACKFILLING, GRADING, LEVELING, WATERING AND COMPACTION OF PLOTS FOR STORAGE YARD Works for MEP Works Hotel West 04 Shura Island in Kingdom of Saudi Arabia As per Red sea Specifications.

Part II

The above works have been completed as red sea approved in accordance with the provisions of Work Order and are now handed over to ELEGANCIA ARABIA



First Party Contractor

By  stamp
Authorized Representative



Second Party Subcontractor

By  stamp
Authorized Representative

This Certificate is made in (2) Two Original Copies signed and stamped by both parties. And The Second party has received his original copy.

IMS-CA-3702M Rev-01



The Subcontractor Work performed under this Subcontract have been inspected by authorized representatives of the Contractor, and the Subcontract Works (or specified part of the Subcontract Agreement, as indicated above) are hereby declared to be initially and provisionally accepted in accordance with the Subcontract on the above date.

A list of minor items to be completed or corrected is appended hereto. This list may not be exhaustive, and the failure to include an item on it does not alter the responsibility of the Subcontractor to complete all the works in accordance with the Subcontractor.


The Subcontractor accepts this Certificate of Initial and Provisional Acceptance of the Subcontract Works and agrees to fulfill his remaining contractual obligations within the times respectively indicated in the Subcontract.



First Party Contractor

By  stamp
Authorized Representative

Second Party Subcontractor

By  stamp
Authorized Representative

This Certificate is made in (2) Two Original Copies signed and stamped by both parties. And The Second party has received his original copy.

IMS-CA-3702M Rev-01



Date: 12 February 2025
Ref.: UB0009-FMD-BULC-LET-25-0001

M/s Basuel United Limited Company And NACC
Kingdom of Saudi Arabia
Aduk. -046 571 763 6847
E-mail: mabdoh@basuel.sa

Attention : Mr. Marwan Abdoh (Projects Manager)

Project : Wadi Safar Main Construction – Delivery Partner, Contract Ref. No. DD-2023-333

Subject : Letter of Intent (LOI) for performing Design, Engineering, Manufacturing, Supply & Installation of Retaining Walls for Amansamar Hotel in Zone 2 as Per Drawings and Project Specifications.

Dear Sir,

UCC & Al Baswani Joint Venture (BUJV) ("the Contractor") hereby confirms via utilizing this letter to serve as a Letter of Intent to perform the works of Design, Engineering, Manufacturing, Supply & Installation of Retaining Walls for Amansamar Hotel Zone 2 as Per Drawings and Project Specifications ("Subcontract Works") which constitute part of the Wadi Safar Main Construction – Delivery Partner, Contract Ref. No. DD-2023-333 ("Project" or the "Main Contract"), for DIBVAH COMPANY ("Employer") to M/s Basuel United Limited Company ("Subcontractor"), in accordance with the terms and conditions stated in this Letter of Intent (the "LOI").

1. Subcontract Agreement

The Contractor hereby gives notice for its intention to award the Scope of Work of Design, Engineering, Manufacturing, Supply & Installation of Retaining Walls for Amansamar Hotel Zone 2 Project to the Subcontractor. The form of Subcontract will be mutually agreed between us based on this Letter of Intent knowing that both parties BUJV & M/s Basuel agree that no binding commitment shall arise until a definitive agreement is executed.

2. Subcontract Scope of Works

Design, Engineering, Manufacturing, Supply & Installation of Retaining Walls for Amansamar Hotel Zone 2 Project in accordance with the Project's drawings and Project specifications. The Subcontract Works shall be executed in accordance with the applicable provisions and specifications of the Main Contract and shall be subject to the Contractor's and Engineer's approvals.

3. Performance Guarantee – 5%

4. Subcontract Price
The Subcontract Price shall be SAR 31,621,720.00 including VAT, (Thirty One Million Six Hundred Twenty One Thousand Seven Hundred and Twenty Saudi Rial Only) on a lump sum basis as per the Quotation BU-1102 dated 20th January 2025 to be further agreed upon.

MJE

Page 1 of 3



5. Terms of Payment
Payment terms shall be mutually agreed upon.

Monthly payments against work executed and approved on site with a deduction for Advance Payment recovery and retention, all relevant documentation to be approved by the Engineer and presented to the Contractor.

Retention 10% (Ten percent)

10% (Ten percent) Retention shall be released in two parts 5% to be released after initial handing over of scope of work and another 5% to be released after 365 defect liability period after project completion certificate.

6. Subcontract Period
Commencement of the Subcontract Works: Effective from LOI date 12th February 2025
Completion Date: as per Project Schedule: 30th September 2025

7. Damages:
A limit of Five Fifteen percent (0.15%) of the Accepted Subcontract Amount for each day or part of a day by which delivery by the Subcontractor exceeds the specified Completion Date with a maximum of 10% of Accepted Subcontract Amount.

In accordance with this LOI, the Subcontractor shall coordinate with the Contractor, proceed with the Subcontract works and technical submittals related to the Works as stated in the LOI, until such time that the Subcontract Agreement is finalized and signed by both Parties.

This LOI is issued in two copies. The Subcontractor shall confirm his unconditional acceptance and compliance with the terms and conditions of this LOI by signing and returning one copy to the Contractor within seven (7) working days from the date of receipt of this LOI by the Subcontractor.

Paet Ezzayat
Contractor Director
On Behalf of BUJV

MJE

Page 2 of 3



12/02/25

Ahmed Salahi
Al Baswani Executive Director
On Behalf of BUJV

Khaled Chehab
UCC Executive Director (Contractor Representative)
On Behalf of BUJV

Acceptance Statement by Subcontractor
Basuel United Limited Company and NACC – Kingdom of Saudi Arabia hereby confirm our full and unconditional acceptance of the contents of the LOI.

Name: Mr. Marwan Abdoh
Position: Project Manager

Signature: [Signature]

Stamp: Basuel United Ltd company

Position: []
Name: []
Signature: []
Date: []

MJE

Page 3 of 3



Completion Certificate

Releasing Date: Dec 22, 2024
Project Title: Chedi Hotel
Project Location: Giryah – Wadi Safar
Customer/Client: DIBVAH
Main Contractor: Al Baswani & UCC Joint Venture
Consultant: []
Sub-Contractor: Basuel Co. Ltd. and NACC
Address: 12251 Prince Ahmad Bin Abd Al Aziz, Al Wuhad, Riyadh, 12251

This certificate is to whom it may concern.

Scope of Work:

- Supply, Fabrication, Delivery, and Installation of WS satellite offices Steel structure. (Chedi Hotel)
- Includes full internal and external finishing.
- Construction of Chedi Hotel Project Chain-link, Bonding Fences.
- Asphalt Works.
- Landscape Works.
- Full Mobilization.

The Sub-contractor (Basuel Co. Ltd.) has executed all assigned works to him by the client at the mentioned project above and completed all of the tasks successfully, and it has been inspected by BUJV as a main contractor and V/E as a consultant, in order to confirm that the Sub-contractor has worked according to the space and quality required from him.

We are pleased to give our thanks to Basuel Co. Ltd. for all efforts to complete the works assigned to them efficiently while taking all directed safety and environmental instructions into consideration, in addition to that they have the ability to perform MBMs and MBMs.

Project Manager
Eng. Ahmed Salahi

[Signature]



Completion Certificate

Releasing Date: May 26, 2025
 Project Title: Faena Oasis Hotel
 Project Location: Driyah – Wadi Safar
 Customer/Client: Driyah
 Main Contractor: Al Bawani & UCC Joint Venture
 Consultant: V3
 Sub-Contractor: Baseel Co. Ltd. and NACC
 Address: 12253 Prince Ahmad Ibn Abd Al Aziz, Al Wurud, Riyadh 12253

This certificate is to whom it may concern.

Scope of Work:

- Supply, Fabrication, Delivery, and Installation of WS satellite offices Steel structure. (Faena Oasis Hotel) Includes full internal and external finishing.
- Construction of Faena Project Chain-link, Horning Fences.
- Asphalt Works.
- Landscape Works.
- Full Mobilization.

The sub-contractor (Baseel Co. Ltd.) has covered all assigned works to him by the client at the mentioned project above and completed all of the tasks successfully, and it has been inspected by BUJV as a main contractor, and V3 as a consultant, in order to confirm that the sub-contractor has worked according to the specs and quality required from him.

We are pleased to give our thanks to Baseel Co. Ltd. for all efforts to complete the works assigned to them efficiently while taking all directed safety and environmental instructions into consideration, in addition to that they have the ability to perform MBIs and WIs.

Project Manager
 Eng. Maher Jari

Handwritten signature and date: 24.5.25



Certificate of Well Execution Works

Releasing Date: Oct26,2024
 Project Title: NEDM Fence
 Project Location: NEDM Region
 Customer/Client: NEDM
 Main Contractor: Bin Zafrah Co.
 Consultant: BigTel
 Sub-Contractor: Baseel Ltd. Rd. Co. and NACC
 Contractor: 12253 Prince Ahmad Ibn Abd Al Aziz, Al Wurud, Riyadh 12253

This certificate is to whom it may concern.

Scope of work:

Excavation, RC footing works, supply and installation of gates and 73 km of fences according the approved drawings and specs.

The sub-contractor (Baseel Ltd. Rd. Co.) has covered all assigned works to him by the client at the mentioned project above and completed all of the tasks successfully, and it has been inspected by Bin Zafrah as a main contractor, and BigTel as a consultant, in order to confirm that the sub-contractor has worked according to the specs and quality required from him.

We are pleased to give our thanks to Baseel (Ltd. Rd. Co.) for all efforts to complete the works assigned to them efficiently while taking all directed safety and environmental instructions into consideration, in addition to that they have the ability to perform MBIs and WIs.

Chief Executive Officer

Handwritten signature of the Chief Executive Officer.



شركة عيسى سعد بن ظفيرة للمقاولات
 شركة مقاولات ومقاولات عامة - الرياض - المملكة العربية السعودية
 info@binzafrah.com



Certificate of Well Execution Works

Releasing Date: Oct26,2024
 Project Title: Shore base yard – Ras Gasabah
 Project Location: NEDM – Ras Shakh Humaid
 Customer/Client: NEDM
 Main Contractor: Bin Zafrah Co.
 Consultant: AECOM
 Sub-Contractor: Baseel Ltd. Rd. Co. and NACC
 Contractor: 12253 Prince Ahmad Ibn Abd Al Aziz, Al Wurud, Riyadh 12253

This certificate is to whom it may concern.

Scope of work:

Infrastructure works for a site covering an area of 370,000 m2, including supply, installation, testing and commissioning for FF HDPE DN250 FN16 networks and pumps of 2000 GMP in addition to fire hydrants, Potable water network with several boosted pumps and a GPP tank of 340 m3, Storm and sanitary lines consisted of 500 cm Dia. of RC pipes and perforated SPPC class S 580 mm pipes, in addition to DV and LC network, cables, MDB and SMD8 panels. Also, construction, finishing and MEP works for pumps room, electrical room and waste room.

The sub-contractor (Baseel Ltd. Rd. Co.) has covered all assigned works to him by the client at the mentioned project above and completed all of the tasks successfully, and it has been inspected by Bin Zafrah as a main contractor, and AECOM as a consultant, in order to confirm that the sub-contractor has worked according to the specs and quality required from him.

We are pleased to give our thanks to Baseel Ltd. Rd. Co. for all efforts to complete the works assigned to them efficiently while taking all directed safety and environmental instructions into consideration, in addition to that they have the ability to perform MBIs and WIs.

Chief Executive Officer

Handwritten signature of the Chief Executive Officer.



شركة عيسى سعد بن ظفيرة للمقاولات
 شركة مقاولات ومقاولات عامة - الرياض - المملكة العربية السعودية
 info@binzafrah.com



Completion Certificate

Releasing Date: Nov 26, 2024
 Project Title: Royal & Polo Club
 Project Location: Driyah – Wadi Safar
 Customer/Client: Driyah
 Main Contractor: Al Bawani & UCC Joint Venture
 Consultant: V3
 Sub-Contractor: Baseel Co. Ltd. and NACC
 Address: 12253 Prince Ahmad Ibn Abd Al Aziz, Al Wurud, Riyadh 12253

This certificate is to whom it may concern.

Scope of Work:

- Supply, Fabrication, Delivery, and Installation of WS satellite offices Steel structure. (Royal & Polo Club) Includes full internal and external finishing.
- Construction of Royal & Polo Club Project Chain-link, Horning Fences.
- Asphalt Works.
- Landscape Works.
- Full Mobilization.

The sub-contractor (Baseel Co. Ltd.) has covered all assigned works to him by the client at the mentioned project above and completed all of the tasks successfully, and it has been inspected by BUJV as a main contractor, and V3 as a consultant, in order to confirm that the sub-contractor has worked according to the specs and quality required from him.

We are pleased to give our thanks to Baseel Co. Ltd. for all efforts to complete the works assigned to them efficiently while taking all directed safety and environmental instructions into consideration, in addition to that they have the ability to perform MBIs and WIs.

Project Manager
 Eng. Walid Al Hassan

Handwritten signature and date: 26.11.2024



Certificate of Well Execution Works

Releasing Date: 04/15/2024
Project Title: Show Room
Project Location: Khamsi Mushait
Customer/Client: Bin Zafrah
Main Contractor: Baseel Ltd. Rd. Co. and NACC
Contractor: 12253 Prince Ahmad Bin Abd Al Aziz, Al Wurud, Riyadh 12253

Scope of work:
Is to supply and construct a steel structure including all mason works and finishing works, and a separated utility area, also cladding works for front finishing. HVAC system and electrical works were also in the scope of work. In addition to the landscape works, the project has covered an area of 4800 m2.

The main contractor (Baseel Ltd. Rd. Co.) has covered all assigned works to him by the client at the mentioned project above and completed all of the tasks successfully, and it has been inspected by Bin Zafrah as a client, in order to confirm that the contractor has worked according to the specs and quality required from him.

We are pleased to give our thanks to Baseel Ltd. Rd. Co. for all efforts to complete the works assigned to them efficiently while taking all directed safety and environmental instructions into consideration.

Chief Executive Officer
Bin Zafrah Contracting Company



Completion Certificate

Releasing Date: Feb 19, 2025
Project Title: Six Senses Hotel
Project Location: Diriyah - Wadi Safar
Customer/Client: Diriyah
Main Contractor: Al Bawani & UCC Joint Venture
Consultant: V3
Sub-Contractor: Baseel Co. Ltd. and NACC
Address: 12253 Prince Ahmad Bin Abd Al Aziz, Al Wurud, Riyadh 12253

This certificate is to whom it may concern,

Scope of Work:

- Supply, Fabrication, Delivery, and Installation of WS satellite offices Steel structure. (Six Senses Hotel) Includes full internal and external finishing.
Construction of Six Senses Hotel Project Chain-link, Fencing, Hardings.
Asphalt Works.
Landscape Works.
Full Mobilization.

The Sub-contractor (Baseel Co. Ltd.) has covered all assigned works to him by the client at the mentioned project above and completed all of the tasks successfully, and it has been inspected by BUJV as a main contractor, and V3 as a consultant, in order to confirm that the Sub-contractor has worked according to the specs and quality required from him.

We are pleased to give our thanks to Baseel Co. Ltd. for all efforts to complete the works assigned to them efficiently while taking all directed safety and environmental instructions into consideration, in addition to that they have the ability to perform MRB and WIRB.

Project Manager
Eng. Nader Haddad

Handwritten signature and notes in Arabic.



Certificate of Well Execution Works

Releasing Date: 04/15/2024
Project Title: Tammiah Offices
Project Location: Khamsi Mushait
Customer/Client: Al - Tammiah
Main Contractor: Bin Zafrah Co
Sub-Contractor: Baseel Ltd. Rd. Co. and NACC
Contractor: 12253 Prince Ahmad Bin Abd Al Aziz, Al Wurud, Riyadh 12253

This certificate is to whom it may concern,

Scope of work:

Fit-out and finishing works, furniture, MEP and landscape works for GOS offices in Khamsi Mushait.
The sub-contractor (Baseel Ltd. Rd. Co.) has covered all assigned works to him by the client at the mentioned project above and completed all of the tasks successfully, and it has been inspected by Bin Zafrah as a main contractor. In order to confirm that the sub-contractor has worked according to the specs and quality required from him.

We are pleased to give our thanks to Baseel Ltd. Rd. Co. for all efforts to complete the works assigned to them efficiently while taking all directed safety and environmental instructions into consideration.

Chief Executive Officer

Handwritten signature

Bin Zafrah Contracting Company



Certificate of Well Execution Works

Releasing Date: 04/15/2024
Project Title: W017
Project Location: NEOM - W017
Customer/Client: NEOM
Main Contractor: Bin Zafrah Co.
Consultant: AECOM
Sub-Contractor: Baseel Ltd. Rd. Co. and NACC
Contractor: 12253 Prince Ahmad Bin Abd Al Aziz, Al Wurud, Riyadh 12253

This certificate is to whom it may concern,

Scope of work:

- Constructing a new road.
Execution of a storm network.
Execution for stormwater meter network in addition to 20 flow meters.

Street lighting of 96 solar powered lighting poles along 1200 meter long.
The sub-contractor (Baseel Ltd. Rd. Co.) has covered all assigned works to him by the client at the mentioned project above and completed all of the tasks successfully, and it has been inspected by Bin Zafrah as a main contractor, and AECOM as a consultant, in order to confirm that the sub-contractor has worked according to the specs and quality required from him.

We are pleased to give our thanks to Baseel Ltd. Rd. Co. for all efforts to complete the works assigned to them efficiently while taking all directed safety and environmental instructions into consideration, in addition to that they have the ability to perform MRB and WIRB.

Chief Executive Officer

Handwritten signature

Bin Zafrah Contracting Company





NEW ADVANCED CONTRACTING COMPANY

DESIGNING TOMORROW, BUILDING TODAY

N.A.C.C: In-House Excellence from Concept to Completion

At N.A.C.C, our commitment to excellence extends beyond just providing services we ensure a distinguished experience by offering all-encompassing, in-house solutions that cater to various sectors, From the initial conceptualization to the final touches, as detailed in our company profile. What sets us apart is our ability to handle every aspect of our services from A to Z. This approach guarantees the highest standards of quality, precision, and client satisfaction.

✉ info@nacc-intl.com 🌐 www.nacc-intl.com

📍 **Saudi Arabia** – 12253 ,Riyadh ,Al Wurud / **Sweden** – Ramlösa Sverige / **Syria** – Damascus , Free Zone